

SPLIT FIBER LASER MARKING MACHINE

High resolution laser quick and easy to operate

- 1.No Consumables. Long lifespan Maintenance Free
- 2.Multi-functional
- 3.Simple Operation. Easy to use
- 4.High Speed Laser Marking
- 5.Optional rotary axis for different cylindrical



ADVANTAGES

> NO CONSUMABLES, LONG LIFESPAN MAINTENANCE FREE

The Fiber laser source has super long lifespan of over 100,000 hours without any maintenance. No need to spare any extra consumer parts at all. Suppose you will work for 8 hours per day, 5 days a week, A fiber laser could work properly for you for more than 8-10 years without extra costs except electricity.

> MULTI-FUNCTIONAL

It could Mark/Code/Engrave un-removable serials Numbers, batch Numbers, Expiry info, Best Before date, logo & any Characters that you want. It could also mark QR code.

> SIMPLE OPERATION, EASY TO USE

Our patent software supports almost all common formats, The operator does not have to understand programming, Just simply set a few parameters and click start.

> HIGH SPEED LASER MARKING

The laser marking speed is very fast, 3-5 times than the traditional marking machine.

> OPTIONAL ROTARY AXIS FOR DIFFERENT CYLINDRICAL

Optional rotary axis can be used to mark on different cylindrical, spherical objects. The stepper motor is used for digital control, and the speed can be automatically controlled by computer, which is more convenient, simple, safe and stable.



Laser source



Lifting handle



Field lens
Galvo head



Ruler



Working platform

SIMPLE

CONVENIENT

DETAIL
ACHIEVEMENT
QUALITY

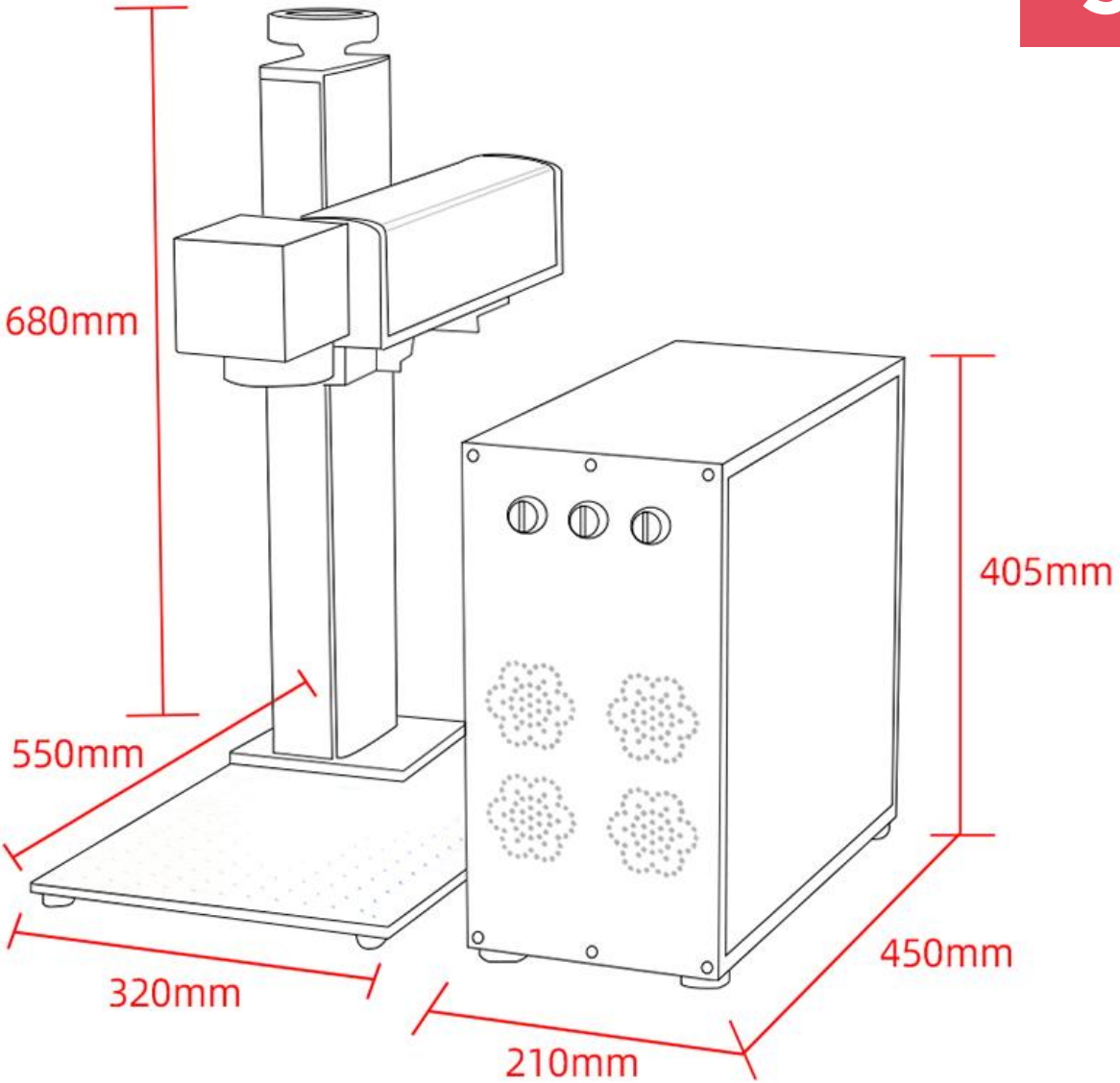


**SPLIT FIBER
LASER MARKING MACHINE**

PARAMETERS

Laser type	Fiber Laser Marking Machine
Working area	110*110/150*150/200*200/300*300(mm)
Laser power	10W/20W/30W/50W
Laser wavelength	1064nm
Beam quality	m ² <1.5
Application	metal and partial nonmetal
Marking speed	7000mm/second
Repeated Precision	+0.003mm
Working voltage	220V or 110V (+-10%)
Cooling mode	Air Cooling
Supported graphic formats	AI,BMP,DST,DWG,DXF,DXP,LAS,PLT
Controlling software	EZCAD
Working temperature	15°C-45°C
Optional parts	Rotary Device, Lift platform, other customizedAutomation
Package	Plywood

SIZE



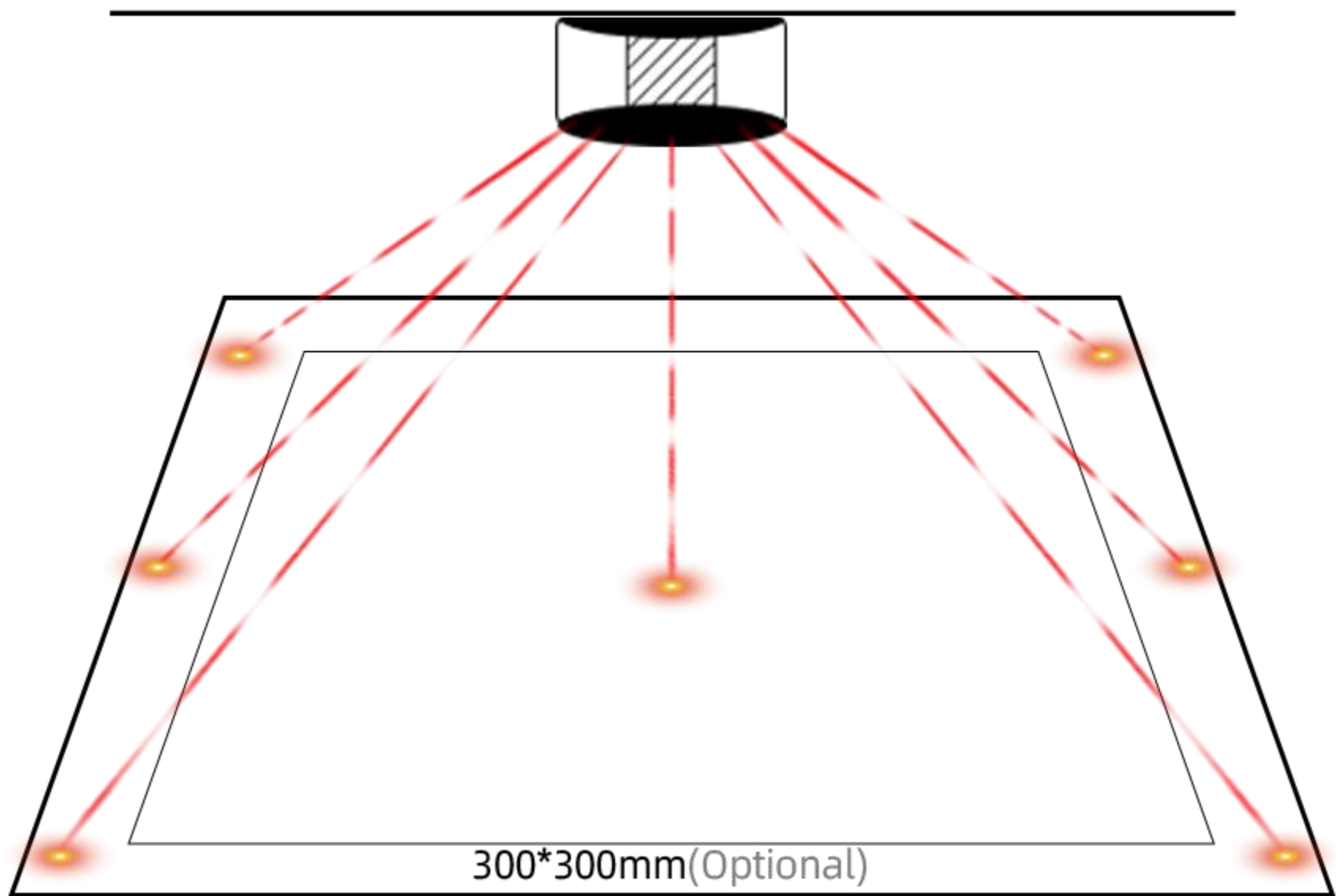
FIELD LENS

We use famous brand to provides precision laser. Standard 110 x 110mm marking area. Optional 150x150mm , 200 x200mm,300x300mm etc.

GALVO HEAD

Famous brand Sino-galvo, high speed galvanometer scan adopting SCANLAB technology, digital signal, high precision and Speed.







LASER SOURCE

We use Chinese famous brand Max laser source.

Optional: IPG / JPT / Raycus laser source.

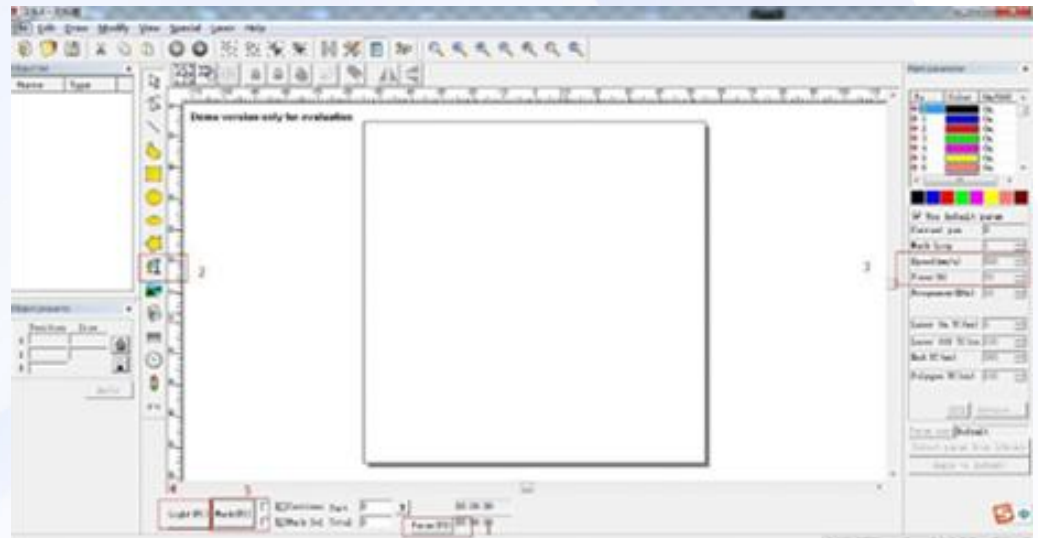


JCZ CONTROL BOARD

Ezcad genuine products, user-friendly interface, functional diversity, high stability, high precision.

Each board has its own number to ensure that it can be inquired in the original factory. Refuse to fake.

CONTROL SOFTWARE



1. Powerful editing function.
2. Friendly interface.
3. Easy to use.
4. Support Microsoft WindowsXP, VISTA, Win7, Win10 system.
5. Support ai, dxf, dst,plt, bmp, jpg, gif, tga, png, tif and other file formats.
6. Support for TrueType fonts, single line fonts (JSF), SHX fonts, dot matrix fonts (DMF),1D bar codes and 2D bar codes. Flexible variable text processing, changing text in real time during processing, can directly read and write text files, SQL databases and Excel file.

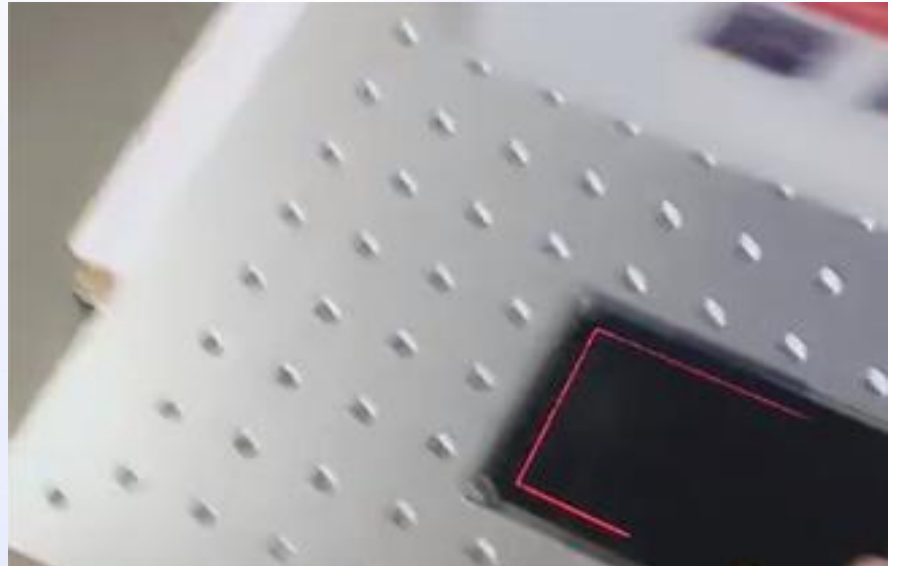
DOUBLE RED LIGHT POINTER

When two red light coincides best focus.
Double red light pointer help customers
make focus quickly and easily.



RED LIGHT PREVIEW

Adopt Red light preview to show the
laser path since laser beam is in-
visible.

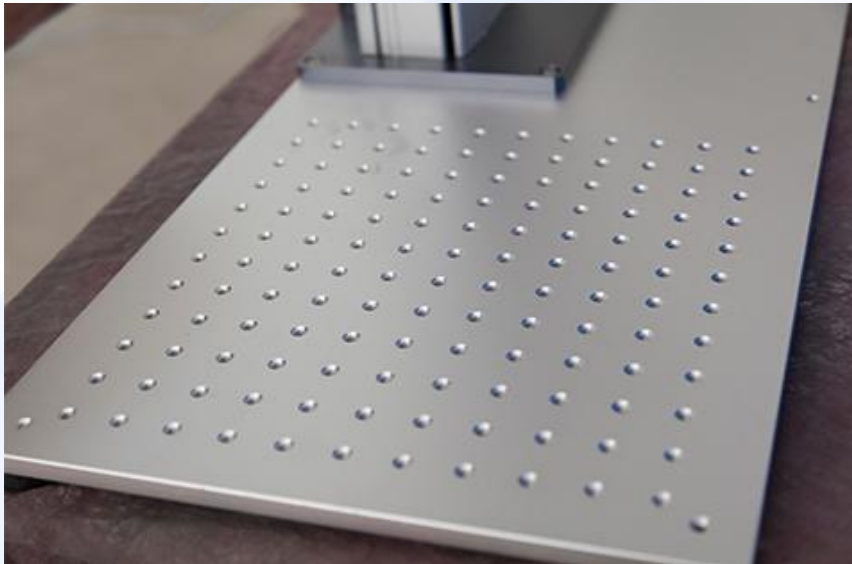




MARKING RULER AND ROTATING HANDLE

Enables customers to precisely position for fast engraving.

Adapting To Different Products Height



WORKING PLATFORM

Alumina working platform and imported precise beeline device.

Flexibility mesa have multiple screw holes, convenient and custom installation, special fixture industry platform.

FOOT SWITCH

It can control the laser on and off.
make the operate more convenient.



GOGGLES(OPTIONAL)

Can protect eyes from laser wave 1064nm, let
the operate more safe.





AIR COOLING SYSTEM
Three built-in Exhaust Fan

Power supply for galvo head and control board

USB computer interface

Rotary device interface

Foot pedal interface

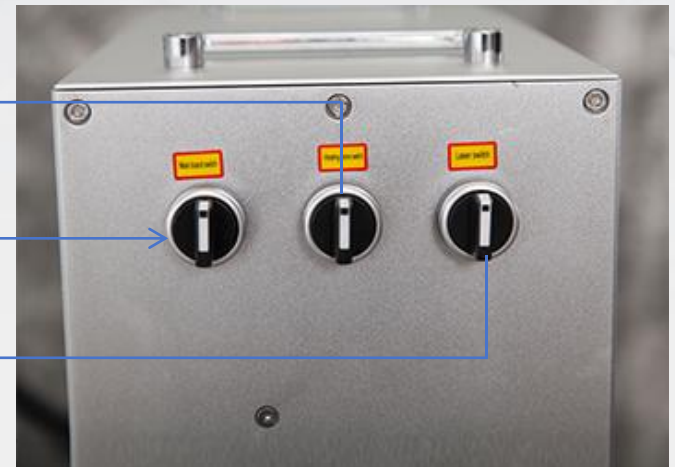
Power interface

Ground wire

Main board switch

Vibrating mirror switch

Laser switch



ACCESSORIES



Tool protection



Focal length ruler



Data Line



Power Cord, Ground wire



CD or U disk



Hexagonal socket wrench



Locking screw



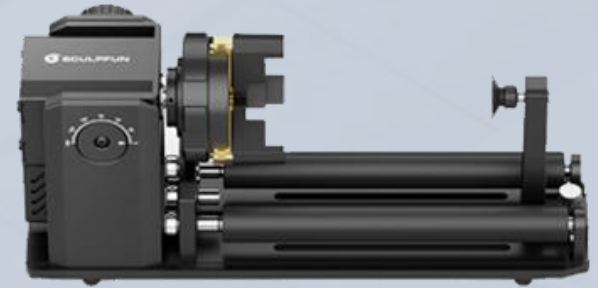
Positioning strip(Optional)



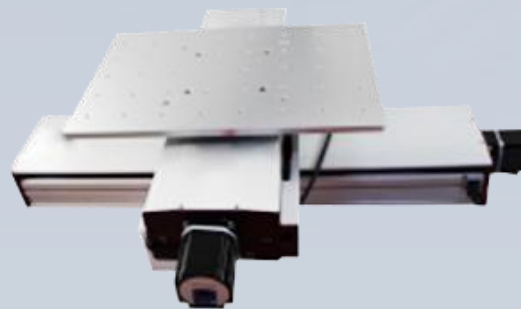
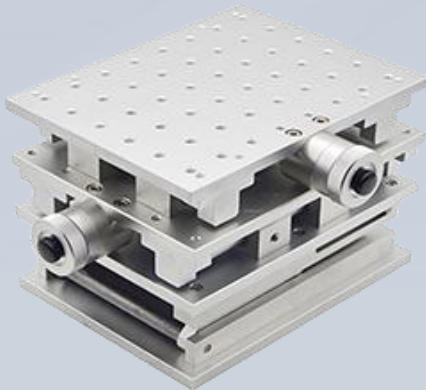
User manual

OPTIONAL ACCESSORIES

ROTARY CHUCK



2D / 3D TABLE AND EXTENDED PLATFORM





Applicable material:

Fiber laser marking machine can work with most metal marking applications, such as Gold, Silver, Stainless Steel, Brass, Aluminium, Steel, Iron etc. and can also mark on many nonmetal materials, such as ABS, Nylon,PVC.



10 YEARS PROFESSIONAL ODM/OEM MANUFACTURER OF LASER EQUIPMENT

30,000m²+

30,000-square-meter
standardized workshop.

27+

We currently hold 27
technical patents.

300+

We produce more than
300 laser equipment
every month.

4+

We own four separate
trademarks.



天人合一
以信为本
用仁义道德实现企业可持续发展
用我们的产品为顾客创造幸福

福斯特激光

以厚德 润天下

Liaocheng Foster Laser Science & Technology Co., Ltd.

Liaocheng Foster Laser Science & Technology Co., Ltd. A professional manufacturer dedicated to the research and production of laser equipment, covers an area of over 10000 square meters. We mainly produce laser engraving machines, laser marking machines, laser cutting machines, laser welding machines, laser cleaning machines.

Since its establishment in 2004, Foster Laser has always adhered to the Customer centric . By 2023, Foster laser equipment has been exported to more than 100 countries and regions, including the United States, Brazil, Mexico, Australia, Turkey, and South Korea, winning the trust and support of customers. The company's products have CE, ROHS and other test certificates, a number of application technology patents, and provides OEM services for many manufacturers.

Foster Laser is equipped with a professional R&D team, sales team, and after-sales team, which can provide you with a perfect purchasing and usage experience. The company can customize products, logos, exterior colors, etc. according to demand. Meet your customization needs.

Foster Laser, looking forward to your visit.





TRADEMARK

10+

United States

Mexico

Britain

Brazil

Italy

Germany

Foster Laser has successfully registered trademarks in 10+ countries, which means the company has obtained legal protection for trademarks in these countries. These registrations not only ensure exclusive use of the company's brand and prevent others from infringing or imitating it, but also provide strong support for the company's expansion in the international market.

International Certification Shows Brand Strength

1. Strict Quality Control Standards

2. Authoritative Certification

3. Brand Guarantee



PACKAGING



Machine cleaning and
Protective oil processing



Wrapping with
protective film



Forklift moving goods



Transportation



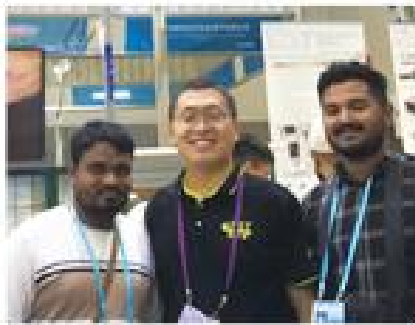
Container Sealing



Container loading

EXHIBITION

Partners come from all over the world
With 10 years of export experience





Q: How can I choose the most suitable machine?

A: In order to recommend you the most suitable machine model, please let us know the following details:

1.What is your material? 2.The size of material? 3.The thickness of material?

Q:When I got this machine,but I don't know how to use it. What should I do?

A:We will send operation video and manual for the machine. Our engineer will do training online. If needed, we can send our engineer to your site for training or you can send the operator to our factory for training.

Q:If some problems happen to this machine, what should I do?

A:We provide two years machine warranty. During the two-year warranty, in case any problem for the machine, we will provide the parts free of charge (except for artificial damage). After the warranty, we still provide whole lifetime service. So any doubts, just let us know, we will give you solutions.

Q:What is the payment terms?

A:The payment terms we accept include:Western Union,T/T,VISA,Online Bank Payment.

Q:How about the shipping ways?

A:Transport by sea is the normal way;If special requirement,need to be final confirmed on both sides.