



SUITABLE FOR SHEET METAL CUTTING

FIBER LASER CUTTING

AGENT DISTRIBUTOR OEM/ODM SERVICES





FOSTER LASER

SUPER FA

We are dedicated to developing and producing the highest quality fiber laser cutting, laser welding, laser marking, and laser engraving machines.



Since

2015

Foster began working in the laser research and development business in 2015.

Production Capacity

300

We currently produce 60 sets of fiber laser cutting machines per month, with a goal of 300 sets per month.

Factory area

6000

Our factory is in Liaocheng, with a 6,000-square-meter standardized workshop.

Famous brand

4

We own four separate trademarks. Foster laser is our worldwide trademark, which is currently being accepted.

R & D patent

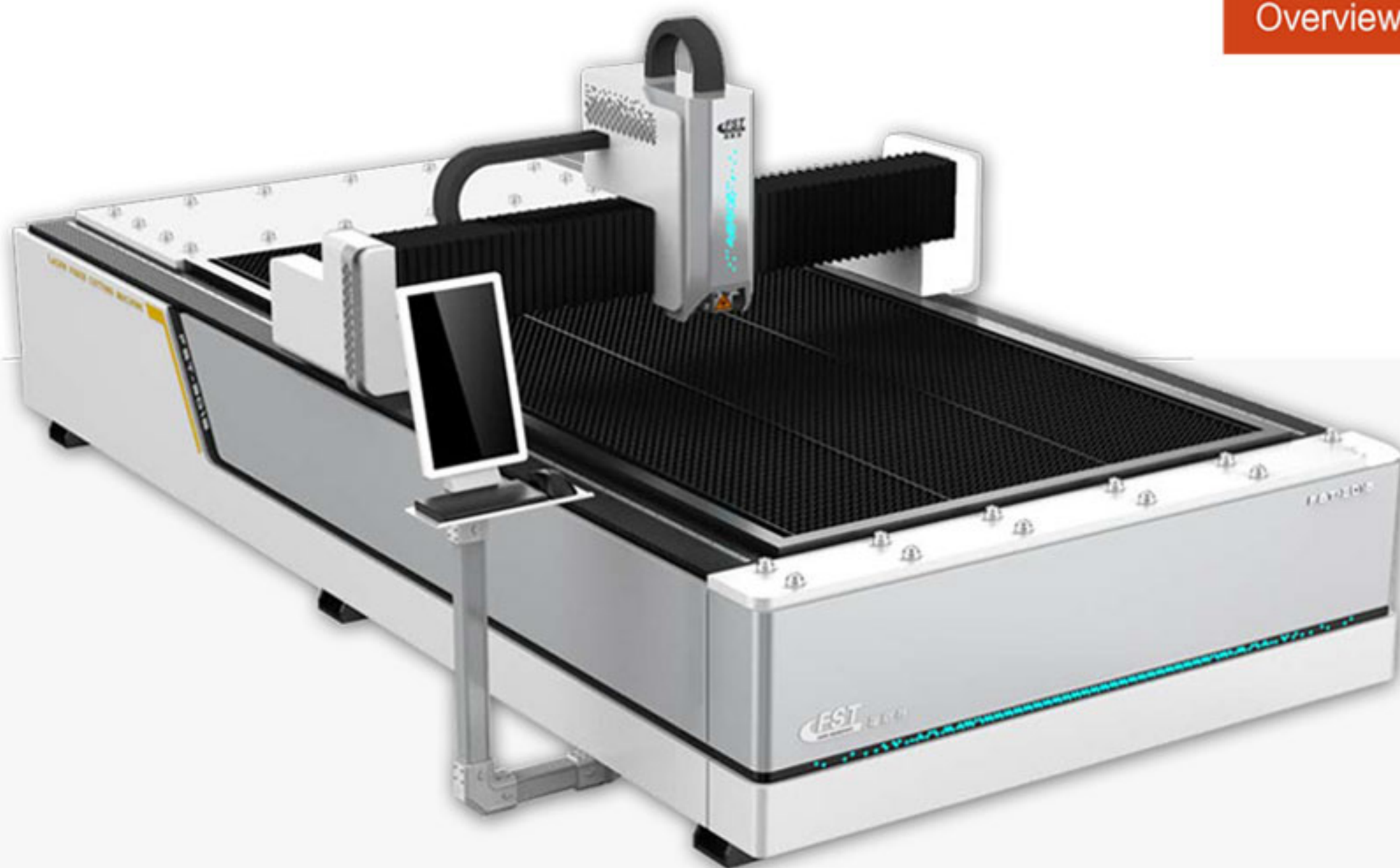
10

We currently hold ten technical patents, with more being added each year.

Service center

10

We have ten after-sales centers around the world.



INTEGRATE FIBER LASER CUTTING MACHINE

Mode & Working Area >

FST-3015
3000x1500mm



Famous brand product

Raycus/MAX/IPG
Fiber Laser
Generator



Japan Shimpo
reducer



Fuji Servo Motor Driver



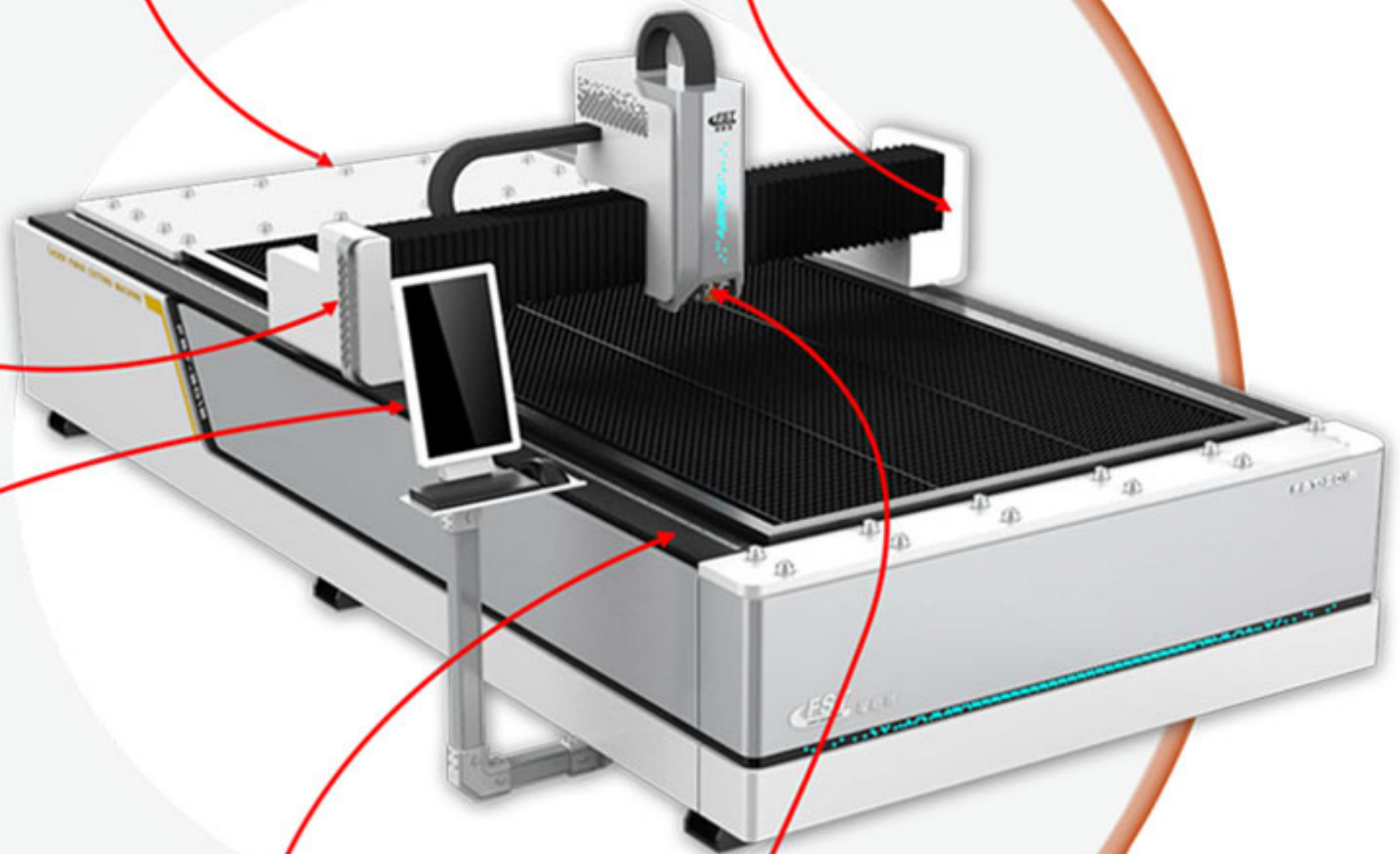
TAIWAN YYC Rack



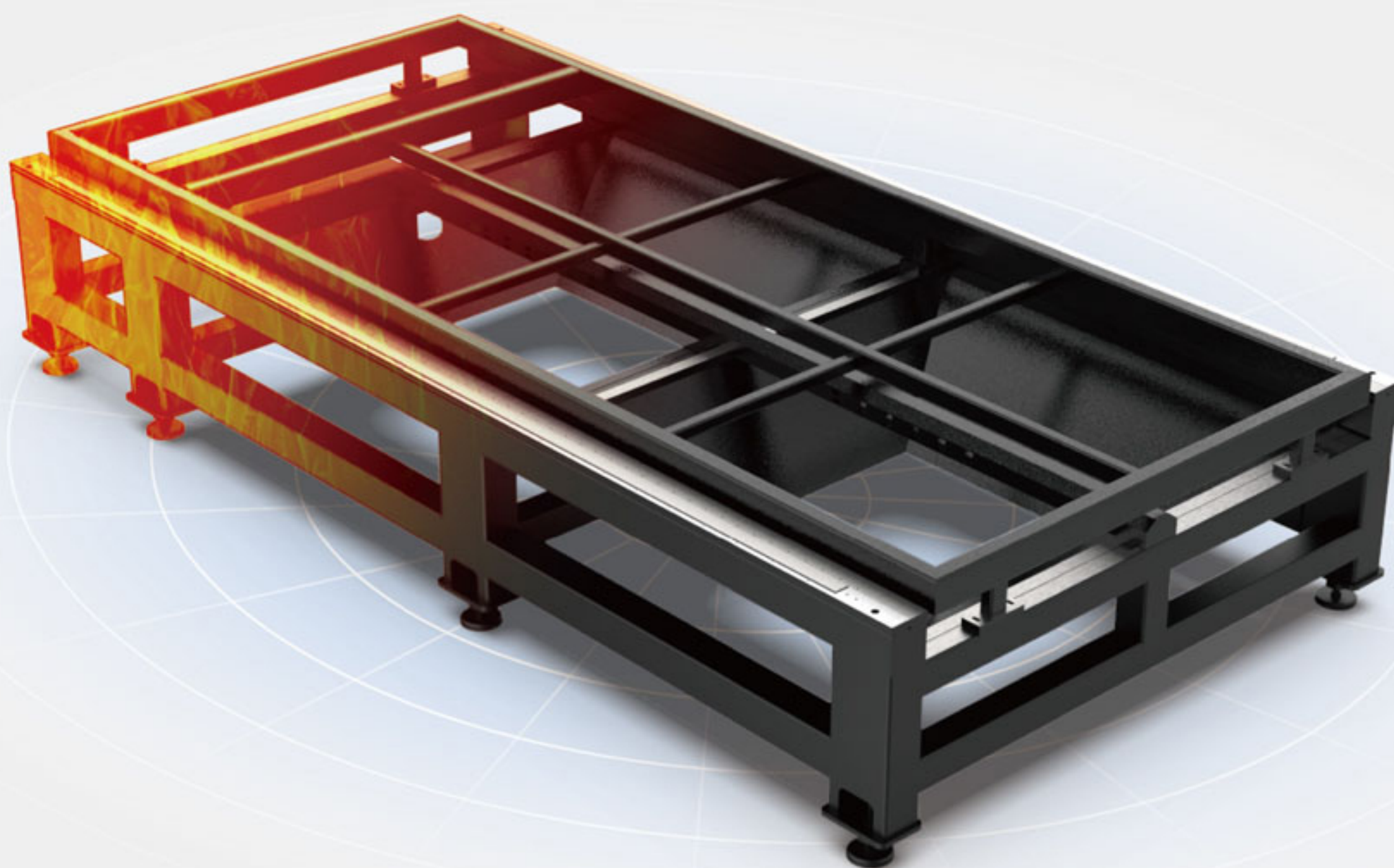
Taiwan HIWIN
Linear Guide Rails



Raytools
Fiber laser head

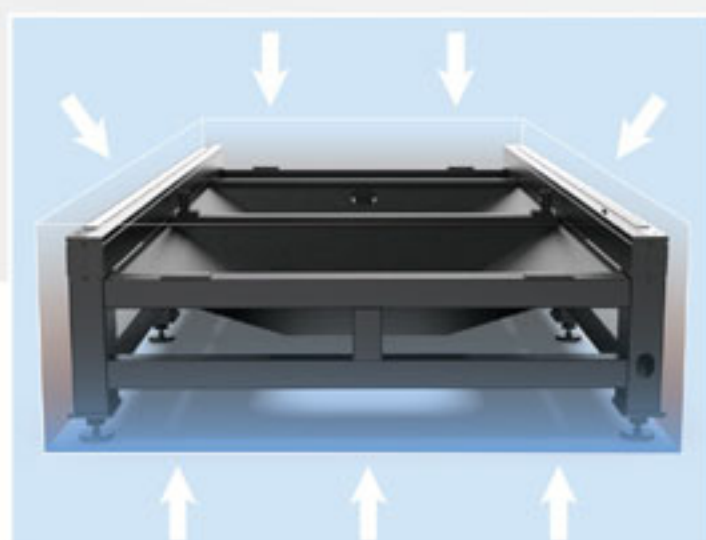


Industrial Machine Bed



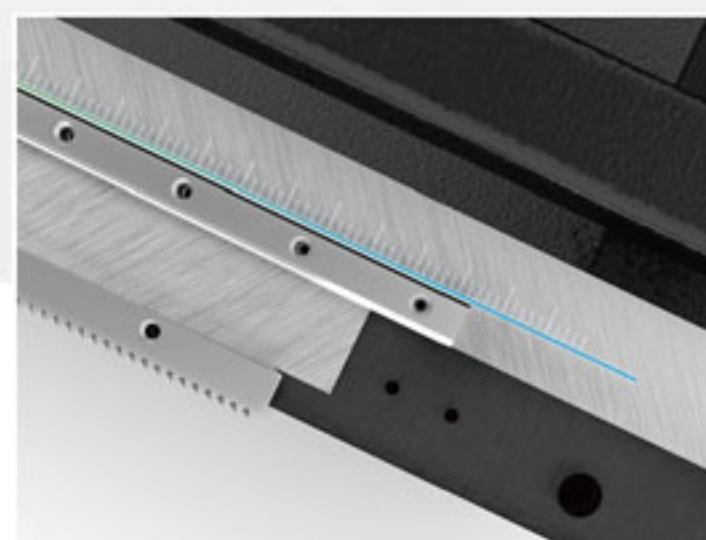
The Segmented Rectangular Tube Welded Bed

The bed's internal structure is an aviation metal honeycomb structure welded together with a number of rectangular tubes. Stiffeners are placed inside the tubes to strengthen the bed's strength and tensile strength, as well as the resistance and stability of the guide rail, preventing deformation.



Lifetime Service

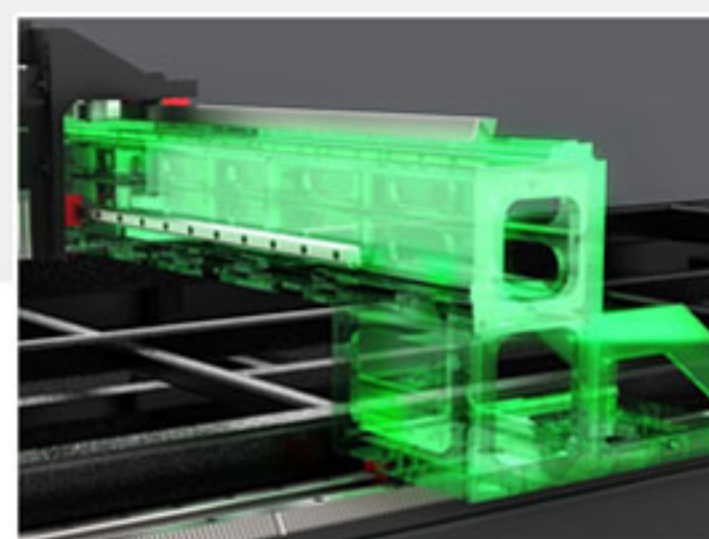
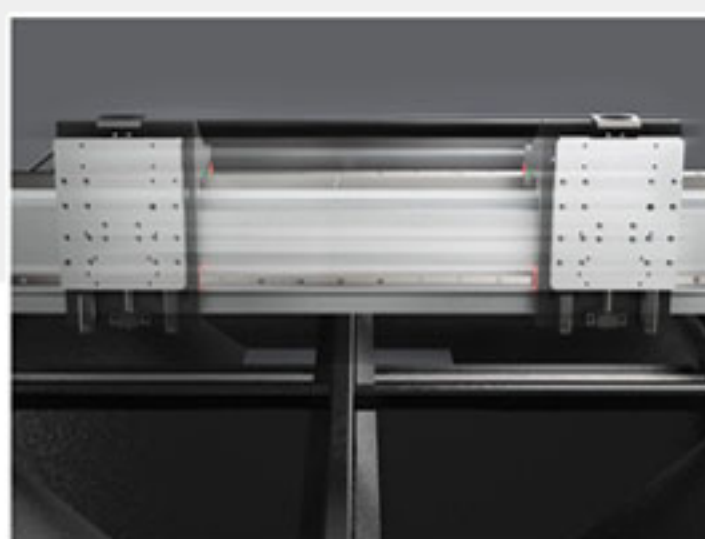
It assures that the machine will perform accurately for a long period and will not distort over its lifetime.



Higher Precision

High tensile strength, stability, and strength, allowing for 20 years of use without distortion

Cast Aluminum Beam



Monolithic cast aluminum beam High Speed

No deformation, light weight, high strength Light cross beams allow equipment to operate at a faster rate, boosting processing efficiency and quality.

The light crossbeam allows the machine to move at a faster rate and enhance cutting efficiency.

More Efficient

The aerospace industry's aluminum profile beam ensures that the equipment has efficient dynamic performance, considerably increasing processing efficiency while maintaining processing quality.

Laser Cutting Head

FST 福斯特

Product
Overview



Multiple Protection

3 protective lenses, highly effective collimating focus lens protection. 2-way optical water cooling extends the continuous working time effectively.

High-precision

To successfully avoid step loss, a closed-loop stepping motor is used. The repetition accuracy is 1 M and the focusing speed is 100 m / s. Dust-proof to IP65, with a patent-protected mirror cover plate and no dead angle.

Various Brands Of Laser Head Are Available

We can provide all high quality laser heads. It has been tested by us for a long time.

Friendess Control System

CypOne / CypCut

CypCut sheet cutting software is an in-depth design for fiber laser cutting industry. It simplifies complex CNC machine operation and integrates CAD, Nest and CAM modules in one. From drawing, nesting to workpiece cutting all can be finished by a few clicks.

- 1.Auto Optimize Imported Drawing
- 2.Graphical Cutting Technique Setting
- 3.Flexible Production Mode
- 4.Statistic of Production
- 5.Precise Edge Finding
- 6.Dual-Drive Error Offset



Main Configuration

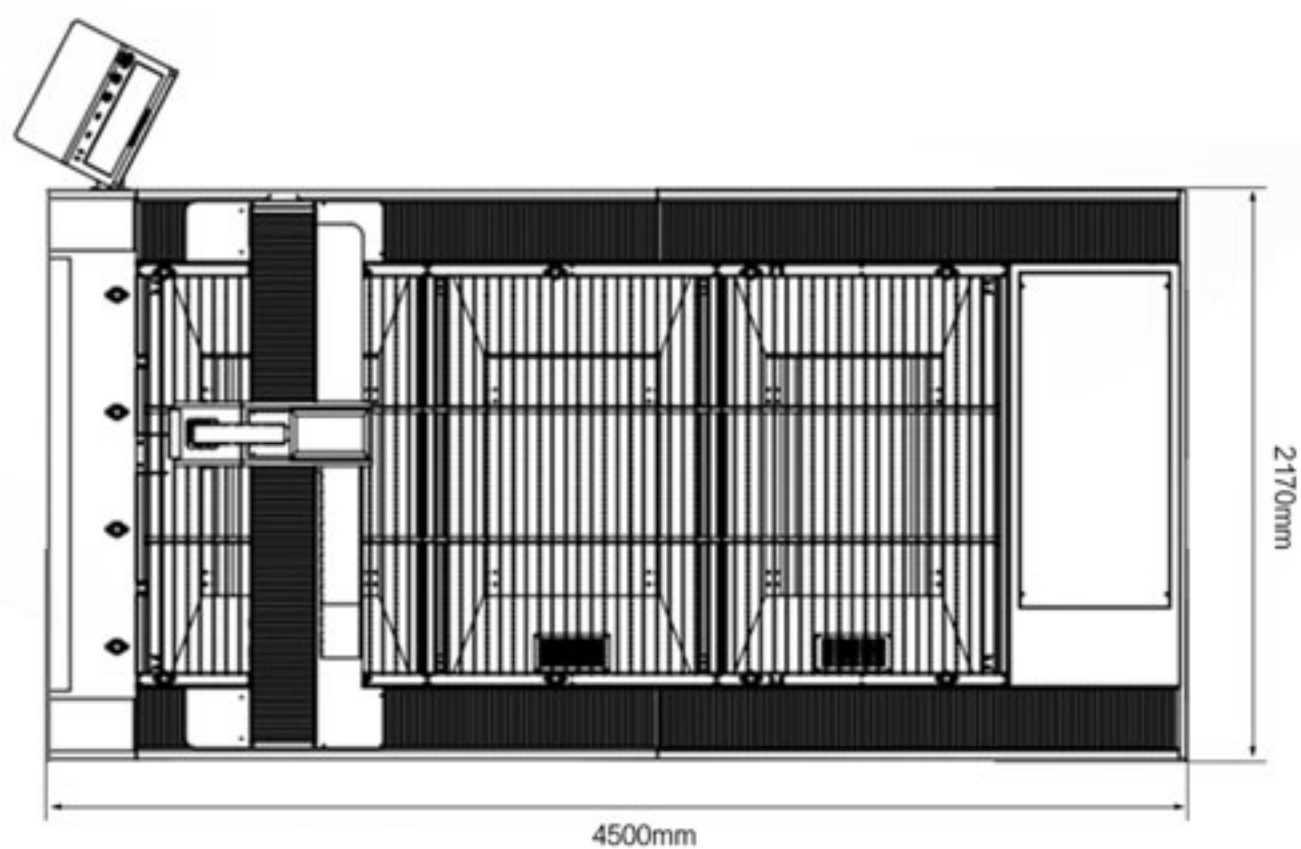
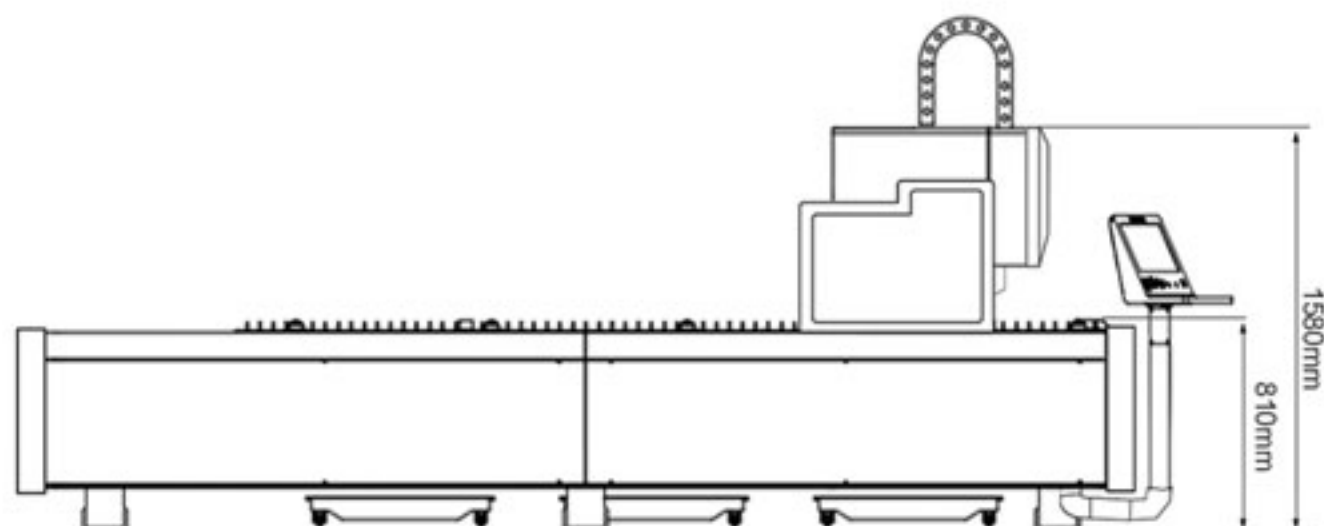
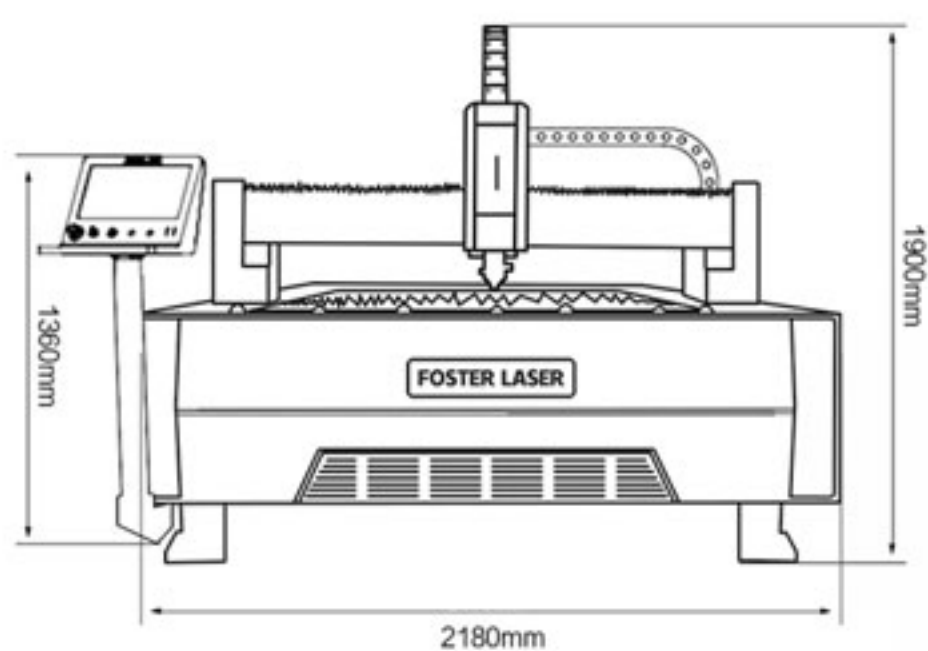
Model	FST-FM Series
Control System	CypOne/CypCut - Friendless
Drives and Motors	Japan Fuji Servo Motor System
Fiber Laser Head	Raytools Laser Head
Fiber Source	Raycus or Max or IPG
Lubrication System	Electrical Motored
Guide Rails	Taiwan HIWIN Rails
Rack and Gear	Taiwan YYC Rack
Driver system power	X=0.75/1.3KW,Y=0.75/1.3KW,Z=400W
Reducer	Japan SHIMPO
Electron Component	DELIXI ELECTRIC
Chiller	HaiLi / S&A
Voltage	220V 1Ph or 380V 3Ph, 50/60Hz
Gross weight	1.9T

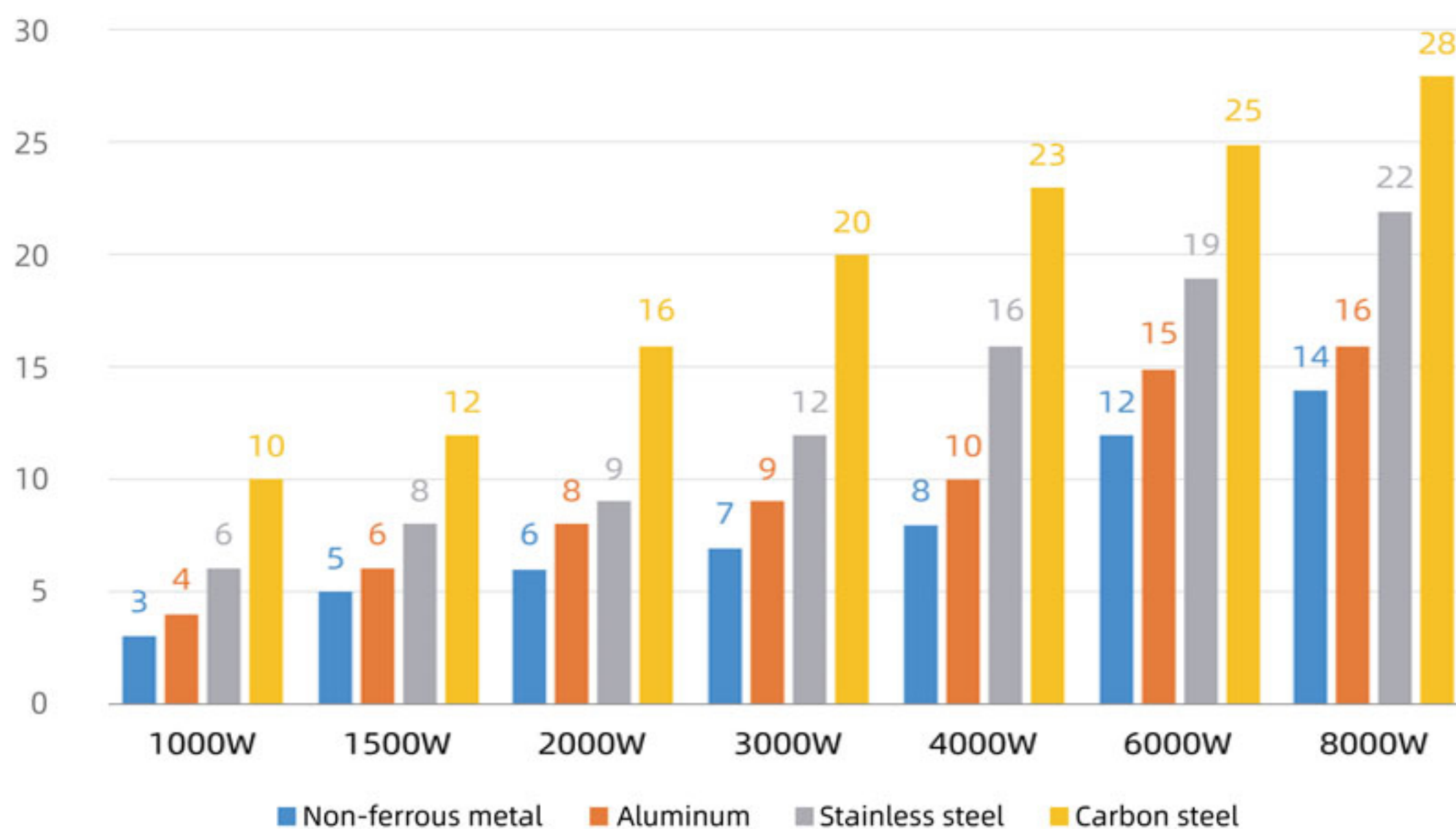
Optional Configuration

Model	Detail	
Control System	CypCut	
Drives and Motors	Yaskawa Servo Motor System	
Fiber Laser Head	RAYTOOLS BM110 Automatic Focus Laser Head	
Stabilizer	Made in China	
Exhaust fan	3KW	
Wooden packing	With metal bracket	

Technical Parameters

Model	FST-FM 3015 Fiber Laser Cutting Machine
Working Size	1500*3000mm
Laser Power	1/1.5/2/3/4/6/8/12KW
Laser Wavelength	1080nm
Laser Beam quality	<0.373mrad
Working Life of Fiber Source	More than 10,0000 hours
Position Type	Red Dot Pointer
Cutting Thickness	0.5-10mm Within The Range Standard Precision
Max. Idle Running Speed	80-110M/min
Max acceleration	1G
Reorientation Accuracy	Within ± 0.01 mm
Lubrication System	Electrical Motored
Cooling mode	Water cooling and protection system
Machine power	9.3KW / 13KW / 18.2KW / 22.9KW
Auxiliary Gas for Cutting	Oxygen, Nitrogen, Compressed Air
Compatible Software	AutoCAD, CorelDraw, etc.
Handle Control	Wireless Control Handle
Graphic Format	DXF/PLT/AI/LXD/GBX/GBX/NC code
Power Supply Voltage	220V 1Ph or 380V 3Ph, 50/60Hz
Warranty	2 Years





Fiber Laser Using Cost

	Plan1: Air cutting (Using air compressor as air supply to cutting stainless steel)	Plan2: O ₂ cutting (cutting stainless steel with O ₂)	Plan3: Nitrogen cutting (cutting stainless steel with N ₂)
Fiber Laser Source	1.50W	5.50W	1.50W
Chiller	2.50W	2.50W	2.50W
Machine Bed	1.50W	1.50W	1.50W
Machine Electric Power	Please contact us to get a detailed quotation and understand the using cost of fiber laser cutting machine		
Wearing Parts			
Gas Consumption	1.50W	4.00USD/H	28.00USD/H
Average Consumption (take 80% cutting efficiency)	1.50W-2.50W	1.50W-2.50W	1.50W-2.50W
Total operating cost	1.50USD/H	4.00USD/H	28.00USD/H

More options

FST 福斯特

Product
Overview



Quality Control Lines



Adjust the height of the feet according to the test results of the strip level to ensure the accuracy of subsequent installation.



Use photoelectric autocollimator to detect the straightness and flatness of the guide rail to ensure that the detection value is within the standard range.



The relative position of the guide rail and the guide rail is locked and clamped by the measuring rod. Statistics and analysis of measurement data to ensure that they are parallel.



After the beam is installed, use a three-coordinate measuring instrument to check the coaxiality to ensure the relative perpendicularity of the X / Y / Z three-axis.



The laser interferometer tests the X/Y-axis positioning accuracy to ensure the accuracy of the whole machine.



Simulate the high-intensity test of various harsh conditions in the actual use of the equipment, and at the same time, according to the requirements of use, rationalize the improvement to ensure the factory pass rate and improve the reliability of the equipment.



Cutting sample inspection



Safe multi-layer packaging, or transport in wooden cases.

Packaging delivery



Machine cleaning and
Protective oil processing



Wrapping with
protective film



Forklift moving goods



Transportation



Container Sealing



container loading

Our certificate

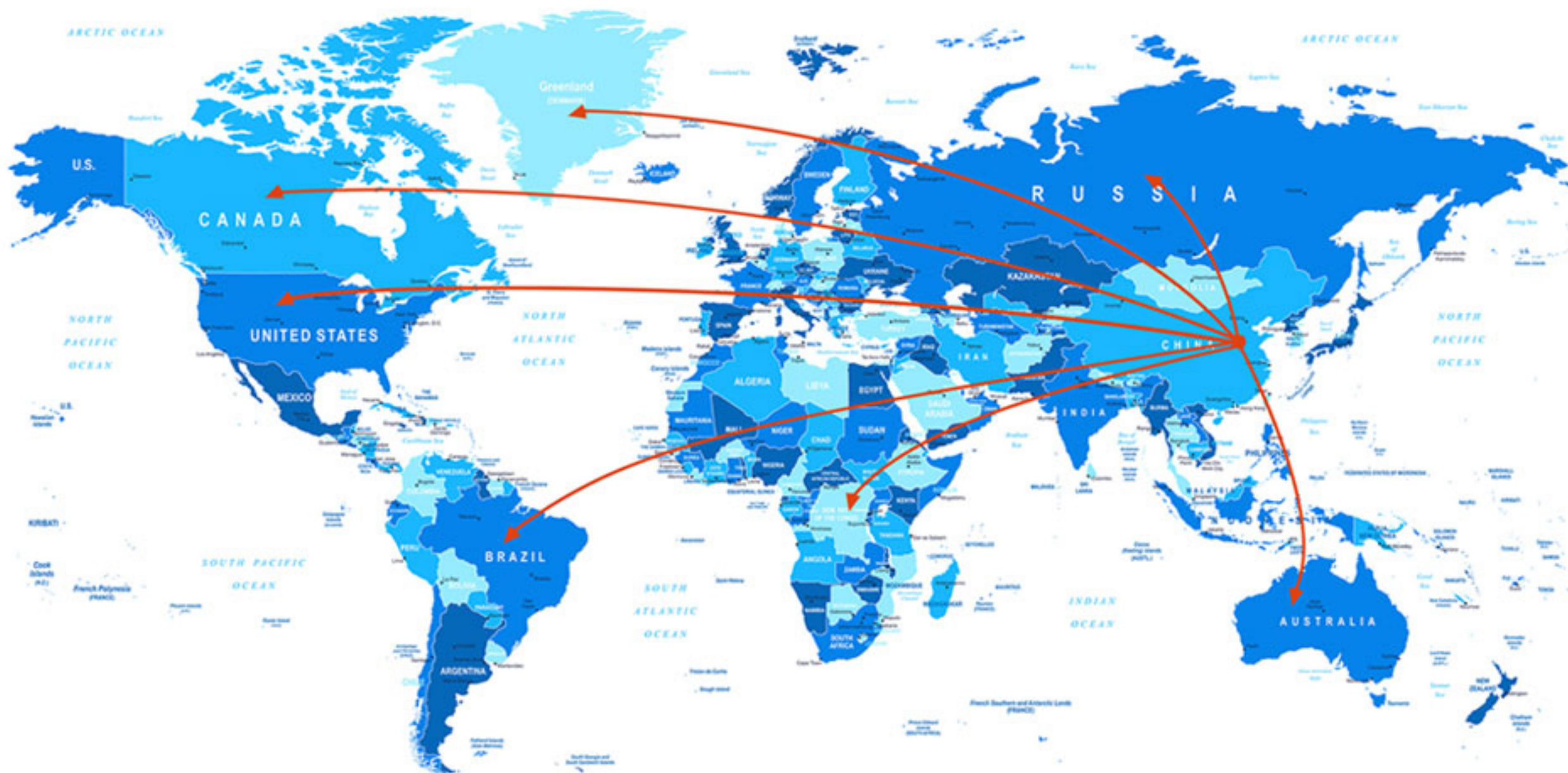
Foster Laser Technology Co., Ltd.

FST 福斯特
Laser Equipment

After
Service



Made in China, serving for the world





No installation is required.

After receiving the goods, you can plug in the power directly after connecting the accessories!

AFTER SALES SERVICE STRONG GUARANTEE

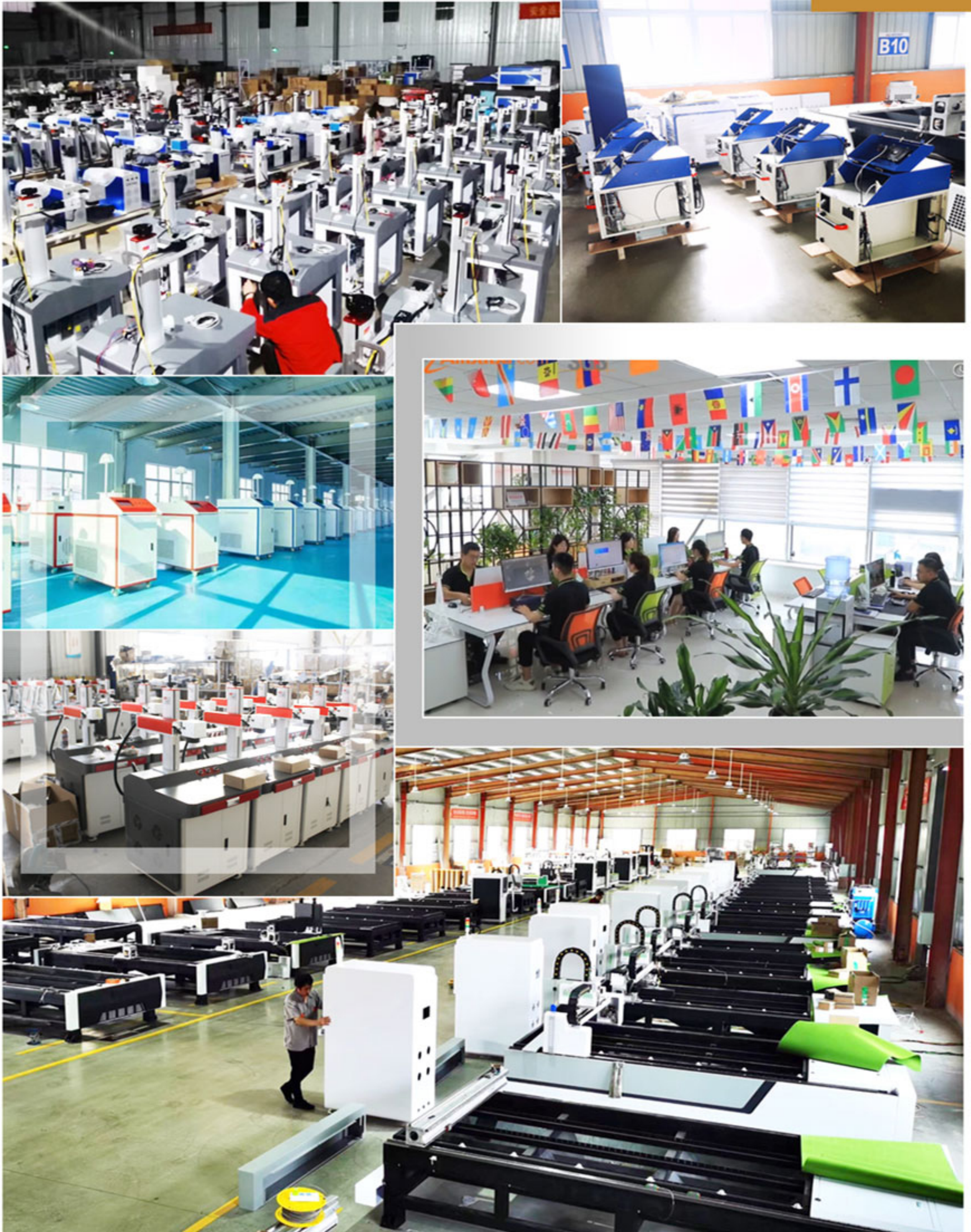
- ✓ We have professional customer service and technical team.
- ✓ Can provide you with 24-hour technical support.
- ✓ We will provide you with a complete set of machine operation tutorials.



Serving For The World

FST 福斯特

After
Service



聊城市福斯特激光科技有限公司

LIAOCHENG FOSTER LASER SCIENCE & TECHNOLOGY CO., LTD

