

FIBER LASER MARKING MACHINE



ADVANTAGES

LASER

Reliable professional
Laser equipment supplier!

> No Consumables, Long lifespan Maintenance Free

The Fiber laser source has super long lifespan of over 100,000 hours without any maintenance. No need to spare any extra consumer parts at all. Suppose you will work for 8 hours per day, 5 days a week, A fiber laser could work properly for you for more than 8-10 years without extra costs except electricity.

> Multi-functional

It could Mark/Code/Engrave un-removable serials Numbers, batch Numbers, Expiry info, Best Before date, logo & any Characters that you want. It could also mark QR code.

> Simple Operation, Easy to use

Our patent software supports almost all common formats, The operator does not have to understand programming, Just simply set a few parameters and click start.

> High Speed Laser Marking

The laser marking speed is very fast, 3-5 times than the traditional marking machine.

> Optional rotary axis for different cylindrical

Optional rotary axis can be used to mark on different cylindrical, spherical objects. The stepper motor is used for digital control, and the speed can be automatically controlled by computer, which is more convenient, simple, safe and stable.

PARAMETER

LASERReliable professional
Laser equipment supplier!

Laser Type	Fiber Laser Marking Machine
Working area	110*110/150*150/200*200/300*300(mm)
Laser power	10W/20W/30W/50W
Laser wavelength	1064nm
Beam quality	$m^2 < 1.5$
Application	metal and partial nonmetal
Marking Speed	7000mm/second
Repeated Precision	$\pm 0.003\text{mm}$
Working voltage	220V / or 110V (+-10%)
Cooling Mode	Air Cooling
Supported graphic formats	AI, BMP, DST, DWG, DXF, DXP, LAS, PLT
Controlling software	EZCAD
Working temperature	15°C-45°C
Optional parts	Rotary Device, Lift platform, other customized Automation
Warranty	2 year
Package	Plywood

Fiber laser marking machine can work with most metal marking applications, such as Gold, Silver, Stainless Steel, Brass, Aluminium, Steel, Iron etc. and can also mark on many non-metal materials, such as ABS, Nylon, PES, PVC, Makrolon.



U disks



Gear



Nameplate



Phone shell



Surgical Instruments



Bearings



Ruler



Metal cup



Tool



Pen



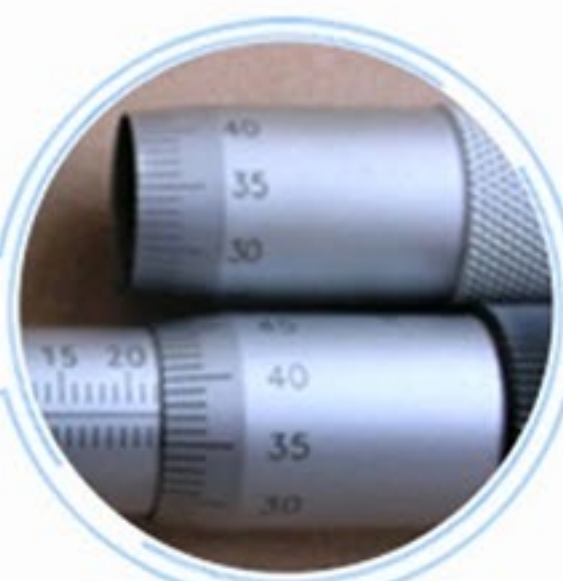
Nameplate



Lighter



Coating Aluminum



Rotary marking



Color marking



Gold/Silver Ring



SD card



Lamp head



Meters



Nail polish



Button



Power Bank



Bank card



Animal Ear Tags



Capacitors



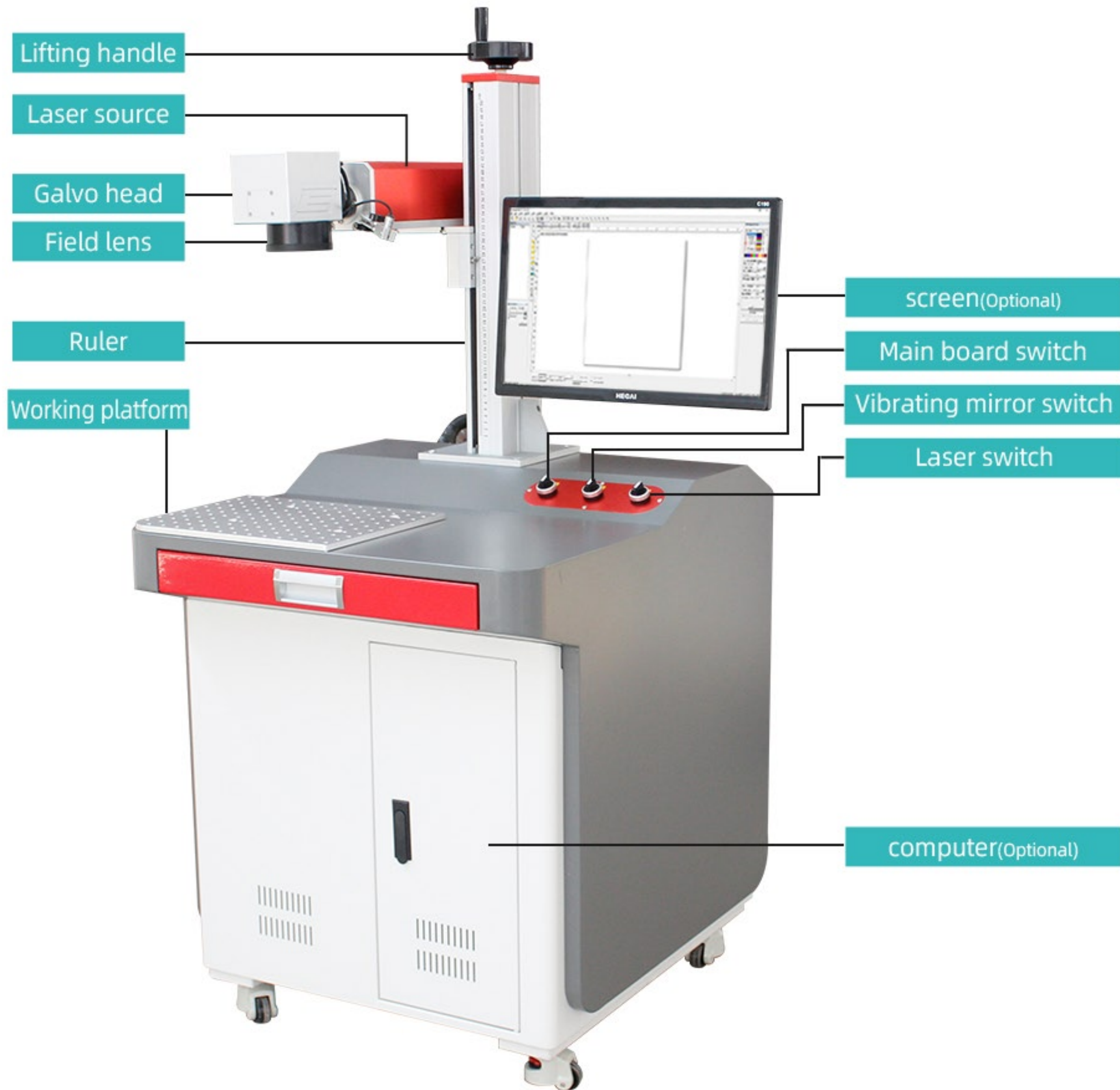
Cosmetic Boxes



Ceramic



Glasses



DETAILS

LASER

Reliable professional
Laser equipment supplier!



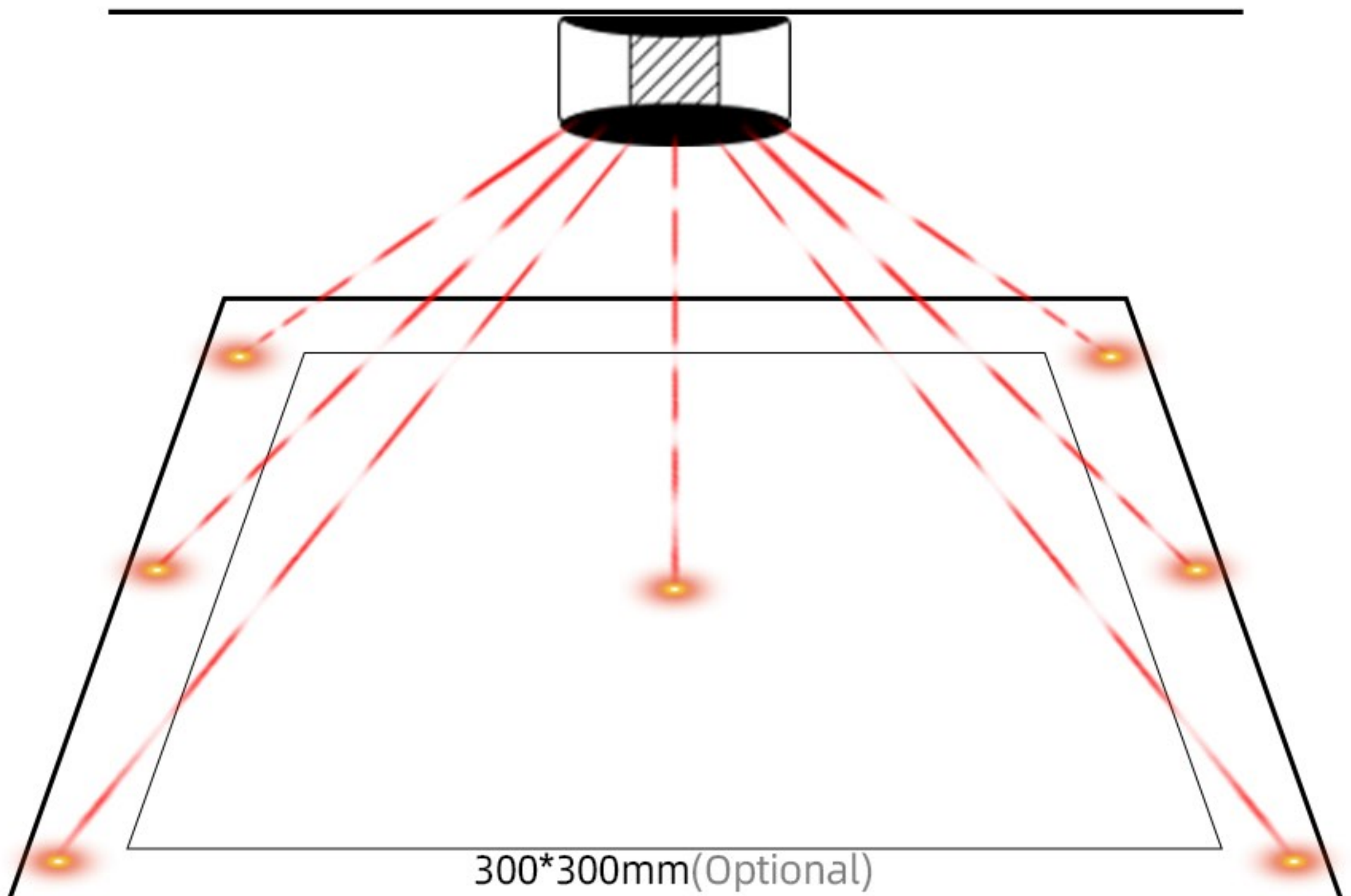


»» FIELD LENS

We use famous brand to provides precision laser. Standard 110 x 110mm marking area. Optional 150x150mm , 200 x200mm,300x300mm etc.

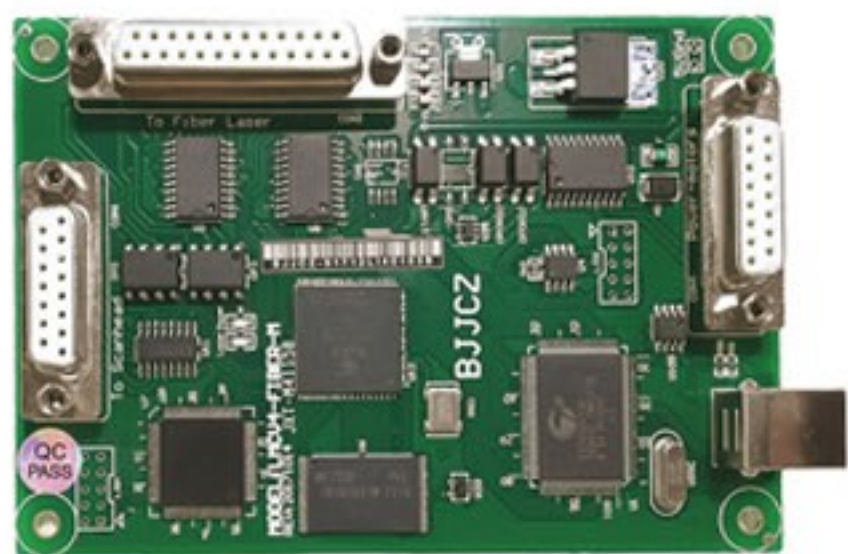
»» GALVO HEAD

Famous brand Sino-galvo, high speed galvanometer scan adopting SCANLAB technology, digital signal, high precision and Speed.



» LASER SOURCE

We use Chinese famous brand Max laser source.
Optional: IPG / JPT / Raycus laser source.

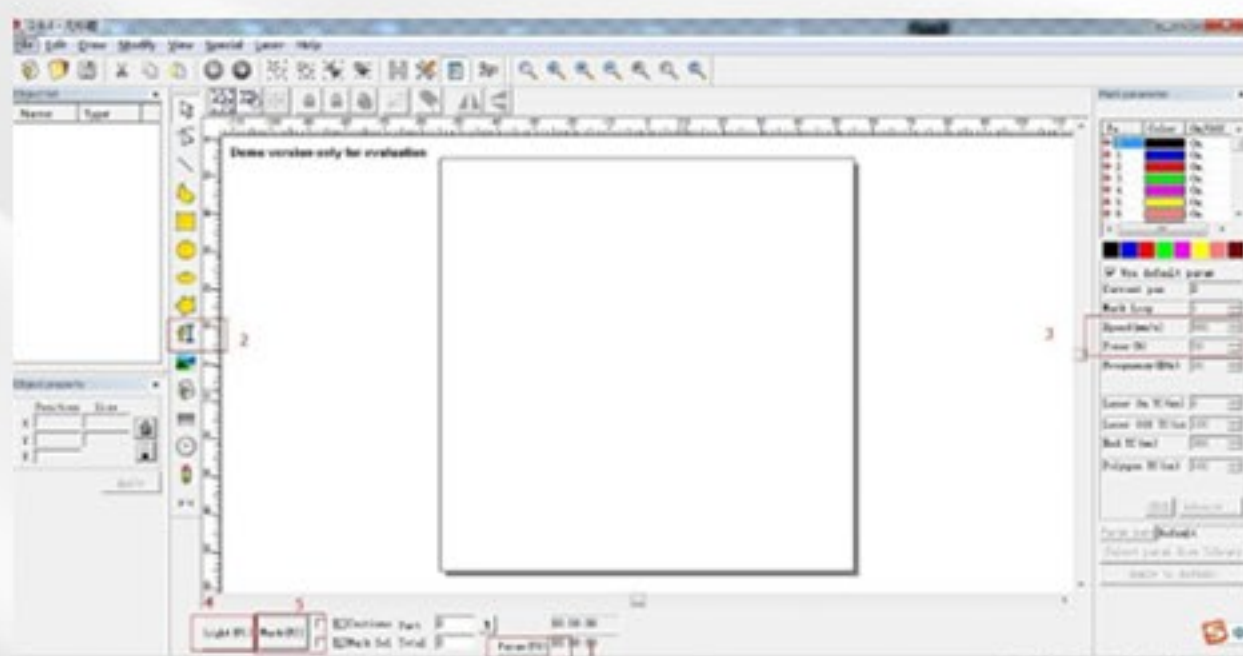


» JCZ CONTROL BOARD

Ezcad genuine products, user-friendly interface, functional diversity, high stability, high precision.
Each board has its own number to ensure that it can be inquired in the original factory. Refuse to fake.

» THE CONTROL SOFTWARE

1. Powerful editing function.
2. Friendly interface.
3. Easy to use.
4. Support Microsoft Windows XP, VISTA, Win7, Win10 system.
5. Support ai, dxf, dst, plt, bmp, jpg, gif, tga, png, tif and other file formats.
6. Support for TrueType fonts, single line fonts (JSF), SHX fonts, dot matrix fonts (DMF), 1D bar codes and 2D bar codes. Flexible variable text processing, changing text in real time during processing, can directly read and write text files, SQL databases and Excel file.

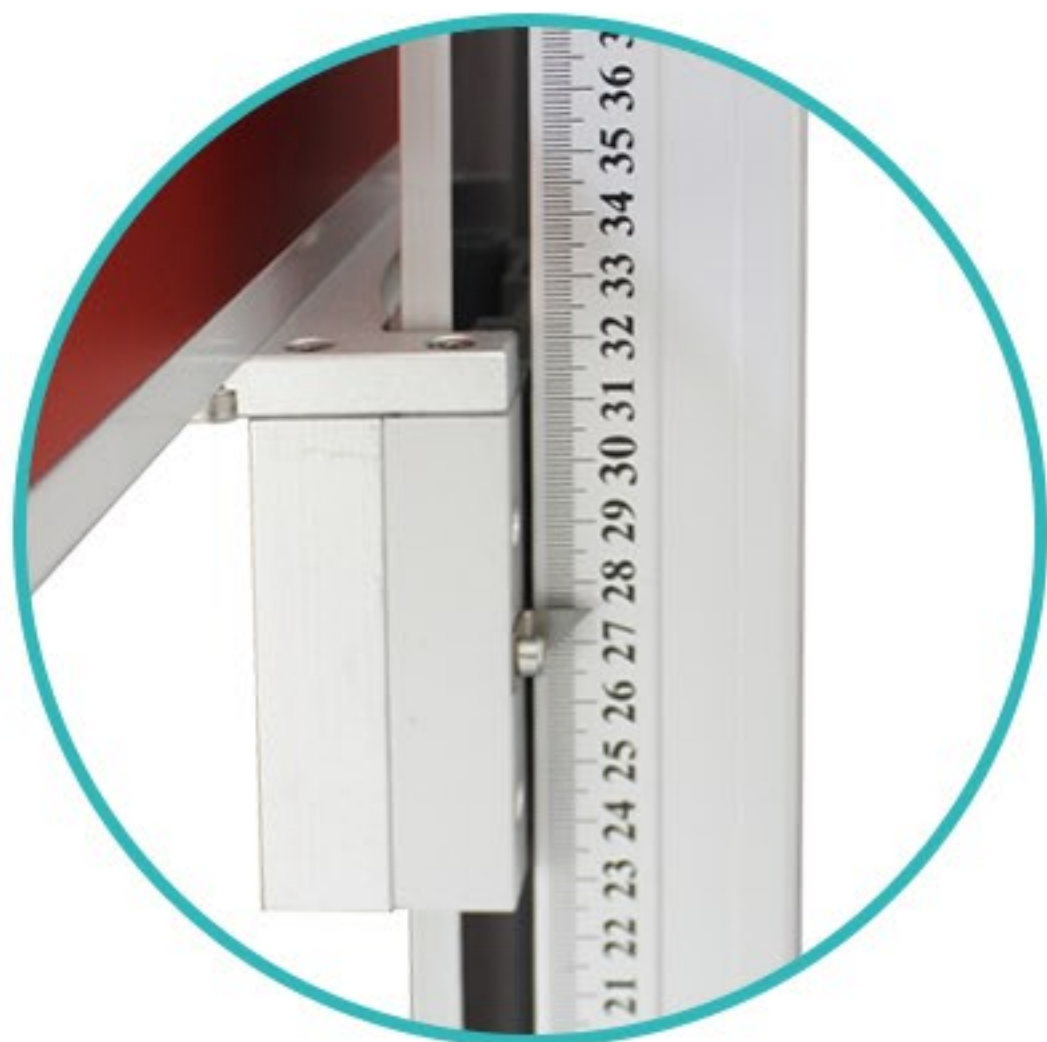


» RED LIGHT POINTER

(OPTIONAL)

»» RED LIGHT PREVIEW

Adopt Red light preview to show the laser path since laser beam is invisible.



»» MARKING RULER AND ROTATING HANDLE

Enables customers to precisely position for fast engraving.
Adapting To Different Products Height



»» WORKING PLATFORM

Alumina working platform and imported precise beeline device. Flexibility mesa have multiple screw holes, convenient and custom installation, special fixture industry platform.

»» FOOT SWITCH

It can control the laser on and off.
make the operate more convenient.





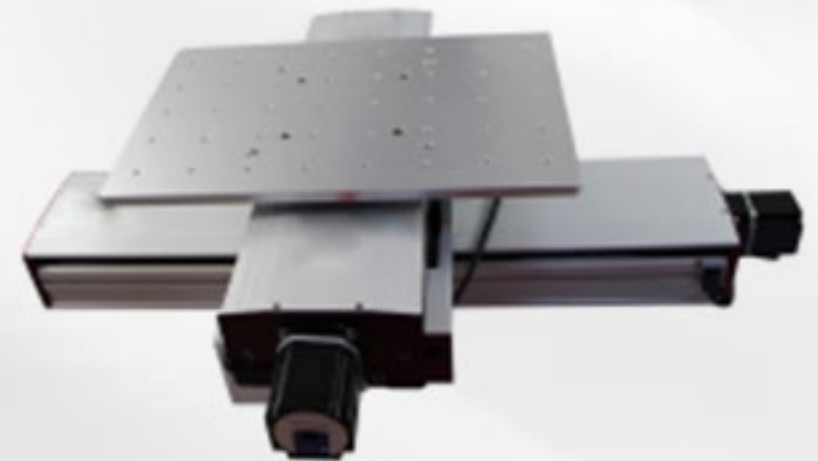
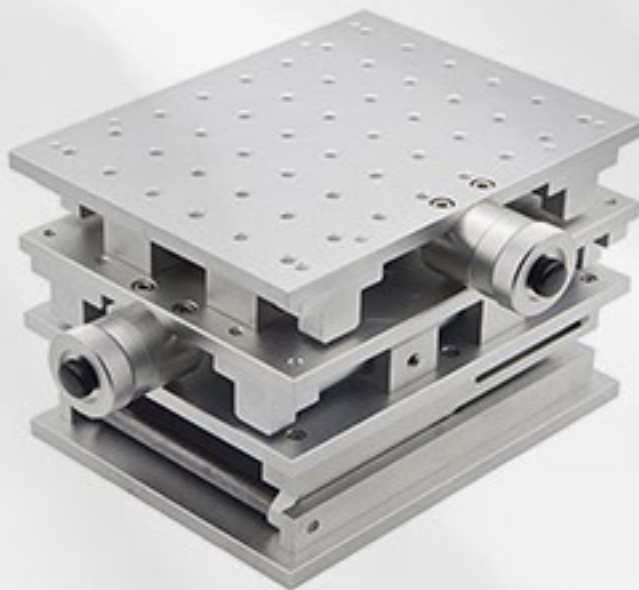
»» GOGGLES (OPTIONAL)

Can protect eyes from laser wave 1064nm, let the operate more safe.

»» ROTATION AXIS AND PLATFORMS (OPTIONAL)



ROTARY CHUCK



2D / 3D TABLE AND EXTENDED PLATFORM

DELIVER GOODS

LASER

Reliable professional
Laser equipment supplier!



Machine cleaning and
Protective oil processing



Wrapping with
protective film



Wooden box sealing



Container Sealing
and Transportation



container loading



Forklift moving goods

ENCLOSURE

LASER

Reliable professional
Laser equipment supplier!



Tool protection



Focal length ruler



Data Line



Power Cord, Ground wire



U disk



Wrench



Foot Switch



Positioning strip(optional)