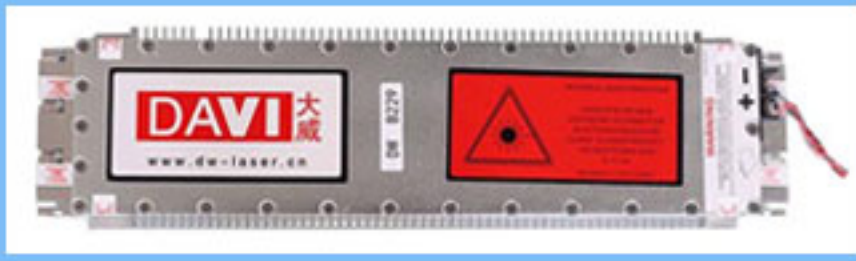


# METAL TUBE RF CO2

## GALVO LASER MARKING MACHINE

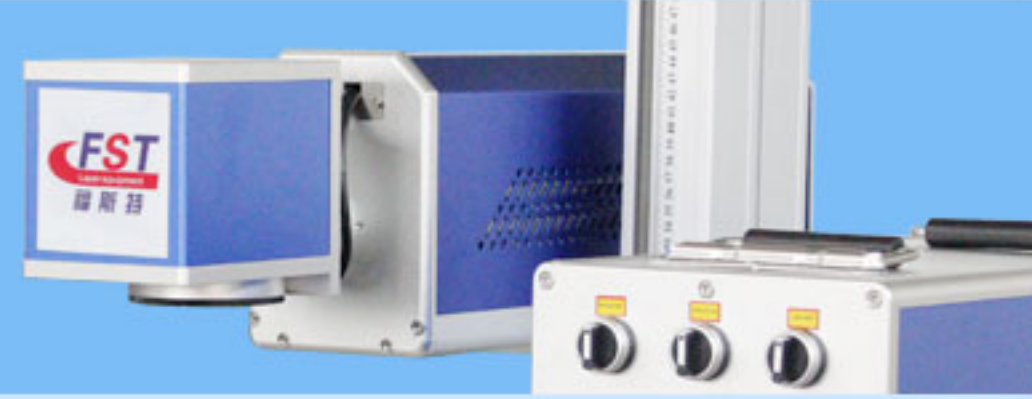






Galvo Co2 laser marking machine is equipped with China best quality laser source Davi. The laser source life more than 20,000 hours.

High-speed galvanometer scanning system with high precision, production capacity is 25 times that of co2 laser engraver.



Air cooling, the extensive equipment performance, competitive of working continuously for 24 hours



# VS



RF CO2 Galvo laser marker

Co2 laser cutter / engraver



7000pcs/day

**Production Capacity**



280pcs/day



1 workers  
1 machines

**7000pcs / day**



25 workers  
25 machines



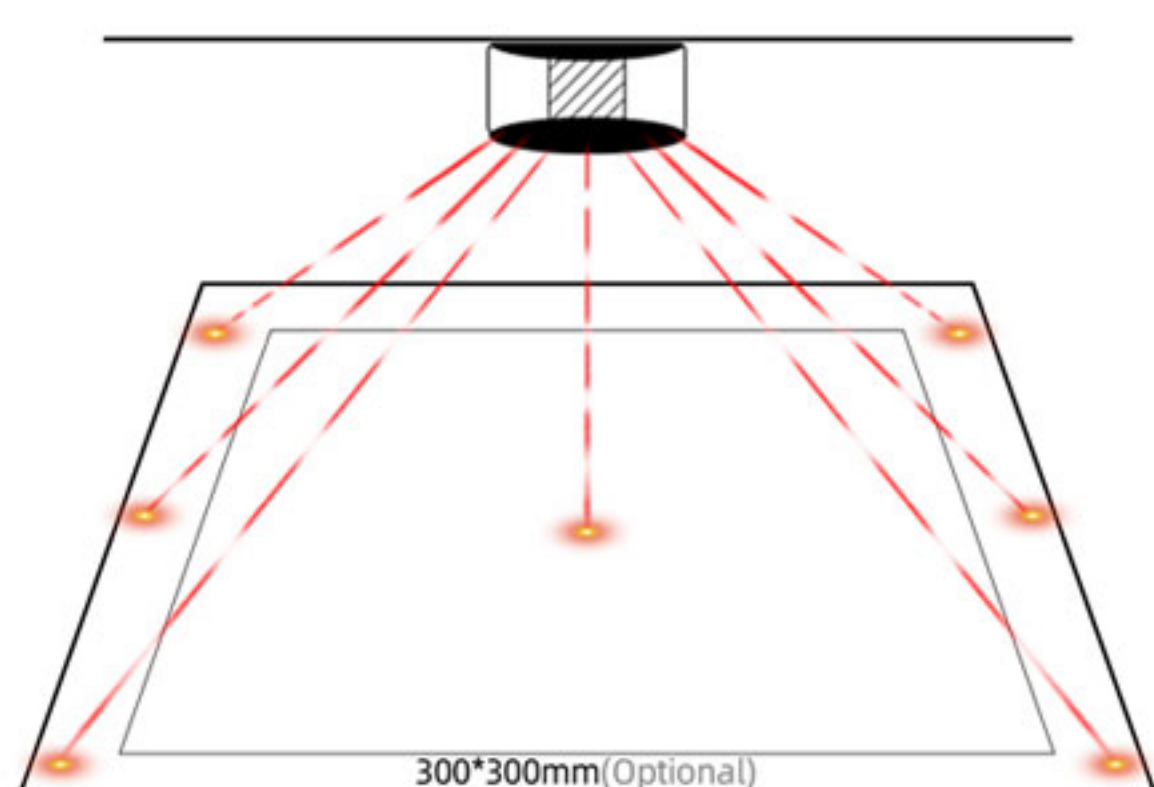
**RF CO2 Laser Marking Machine Specifications**

<b>Products Name</b>	<b>Metal tube RF CO2 Laser Marking Machine</b>
<b>Types &amp; Model</b>	<b>FST Ezcad-Series</b>
<b>Laser Source Brand</b>	<b>DAVI</b>
<b>Laser Power</b>	<b>20W, 30W ,50W, 60W, 100W</b>
<b>Laser Wavelength</b>	<b>10.6um</b>
<b>Max Mar Speed</b>	<b>7000mm/s</b>
<b>Control Card</b>	<b>Original EZCAD from JCZ brand</b>
<b>Filed Lens Brans</b>	<b>wavelength</b>
<b>Galvo Head</b>	<b>Sino Galvo</b>
<b>Marking Area</b>	<b>110*110mm to 300*300mm</b>
<b>Mininum Line Width</b>	<b>0.015mm</b>
<b>Mininum Character</b>	<b>0.2mm</b>
<b>Operation System</b>	<b>Win XP / 7 / 8 / 10 (32 bit, 64 bit)</b>
<b>Power Supply</b>	<b>AC110V / 220V +10% ,50HZ/60HZ</b>



## FIELD LENS AND GALVO HEAD

Chinese famous brand, high precision, high speed.



Marking area: 110×110mm(4.3×4.3in)  
 150×150mm(5.9×5.9in) 175×175mm (6.9×6.9in)  
 200×200mm (7.9× 7.9in) 300×300mm (11.8×11.8in)

## BRAND RF LASER SOURCE

Excellent Davi Laser Source . no need maintenance ,  
 long ife more than 20,000 hours.



VS



✔ Life more than 20,000 hours

✘ Life is around 2,000 hours

✔ Air cooling, no maintenance

✘ Water cooling , need maintenance

Optional brand: synrad

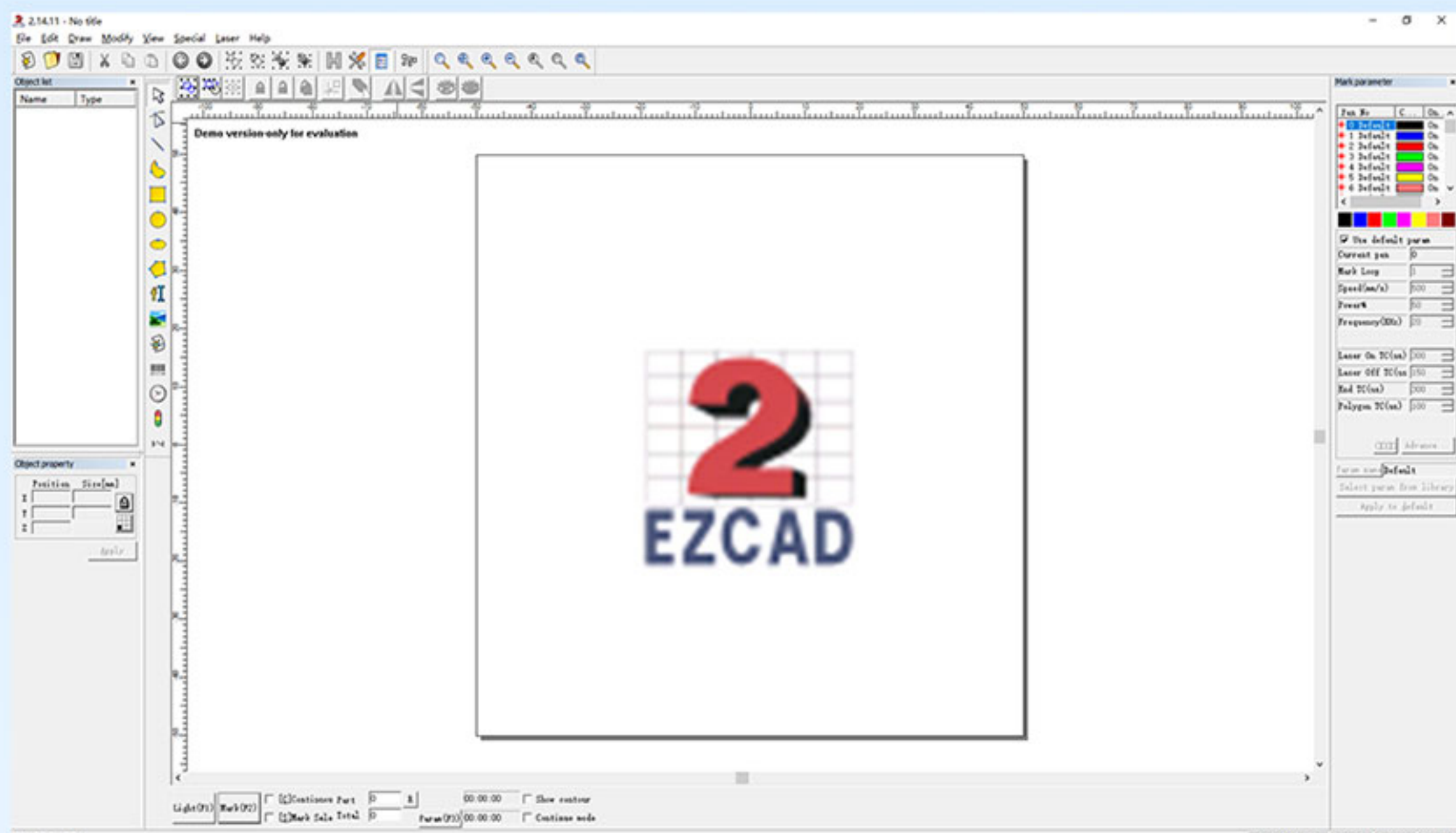
## JCZ CONTROL MOTHERBOARD



- ① Ezcad genuine products
- ② User-friendly interface
- ③ Functional diversity
- ④ High stability
- ⑤ High precision.



# EZCAD CONTROL SOFTWARE



1. Powerful editing function, Friendly interface, Easy to use.
2. Support Microsoft Windows XP, VISTA, Win7, Win10 system.
3. Support ai, dxf, dst, plt, bmp, jpg, gif, tga, png, tif and other file formats.

Optional

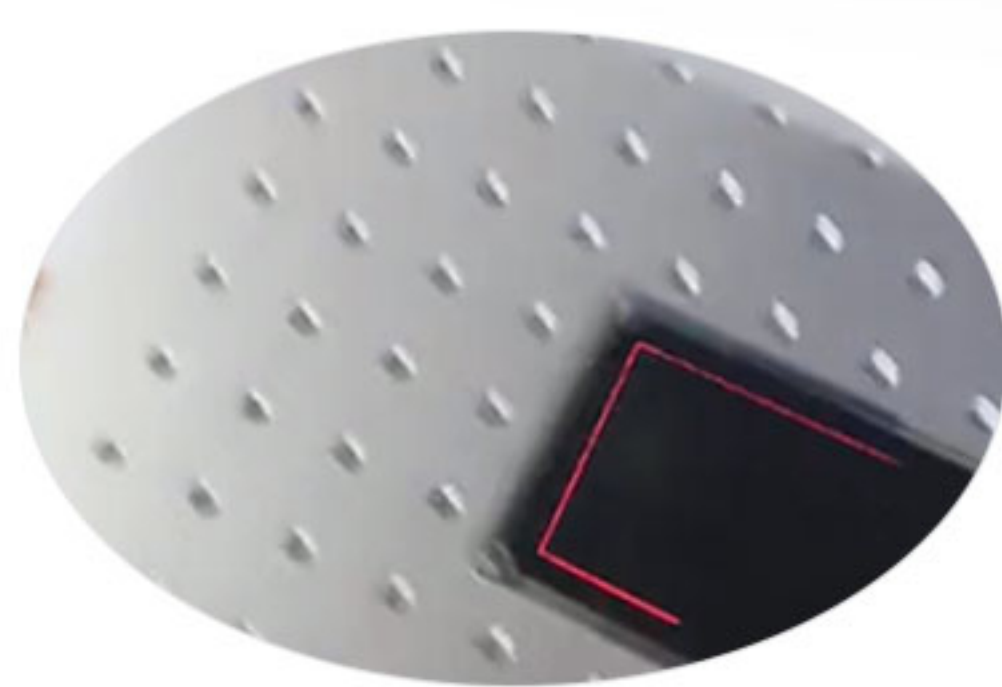
## DOUBLE RED LIGHT POINTER



When two red light coincides best focus. Double red light pointer help customers make focus quickly and easily.

## RED LIGHT PREVIEW

Adopt Red light preview to show the laser path since laser beam is in-visible.



## WORKING PLATFORM



Alumina working platform and imported precise be-line device. Multiple screw holes for convenient installation of rotating shaft, etc.

## FIXTURE (OPTIONAL)

- 1 . easy to put kinds of materials on the worktable.
- 2 . There are multiple flexible screw holes on the worktable convenient for customized installtion.



## MARKING RULER AND ROTATING HANDLE

Enables customers to precisely position for fast engraving. Adapting To Different Products Height.





## POWER SUPPLY

Brand selection:  
Shanghai Hengfu, Taiwan  
Meanwell



## FOOT SWITCH

It can control the laser on and off. make the operate more convenient.



## GOGGLES (OPTIONAL)

Can protect eyes from laser wave 1064nm, let the operate more safe.



## SMOKE PURIFIER (OPTIONAL)

Purify smoke, dust and smell, clean the air and avoid polluting the environment.



**AIR COOLING SYSTEM**  
Three built-in Exhaust Fan

Power supply for galvo head and control board

USB computer interface

Rotary device interface

Foot pedal interface

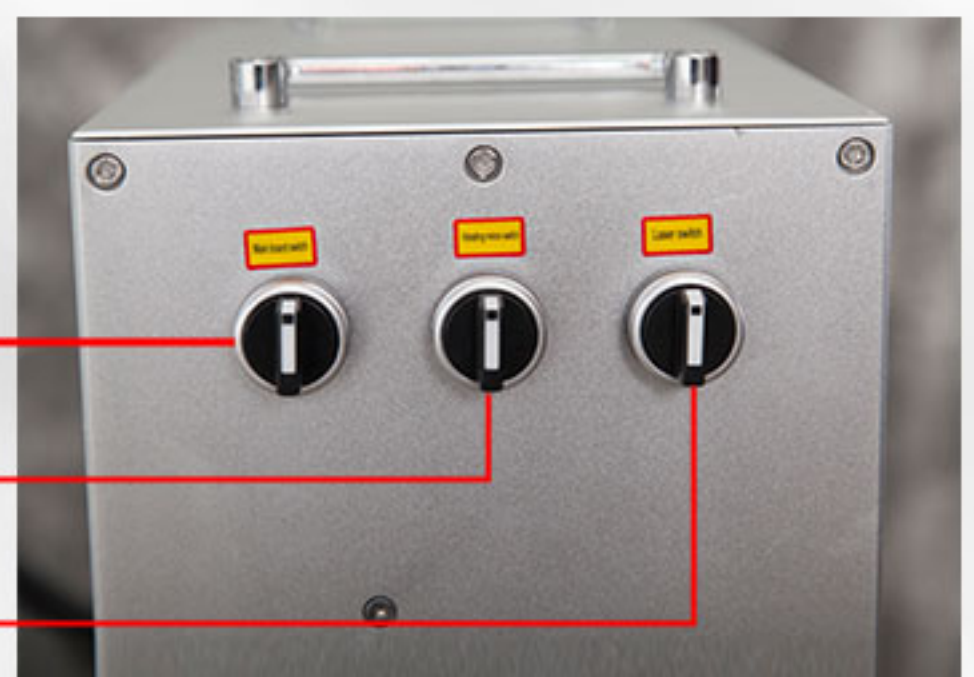
Power interface

Ground wire

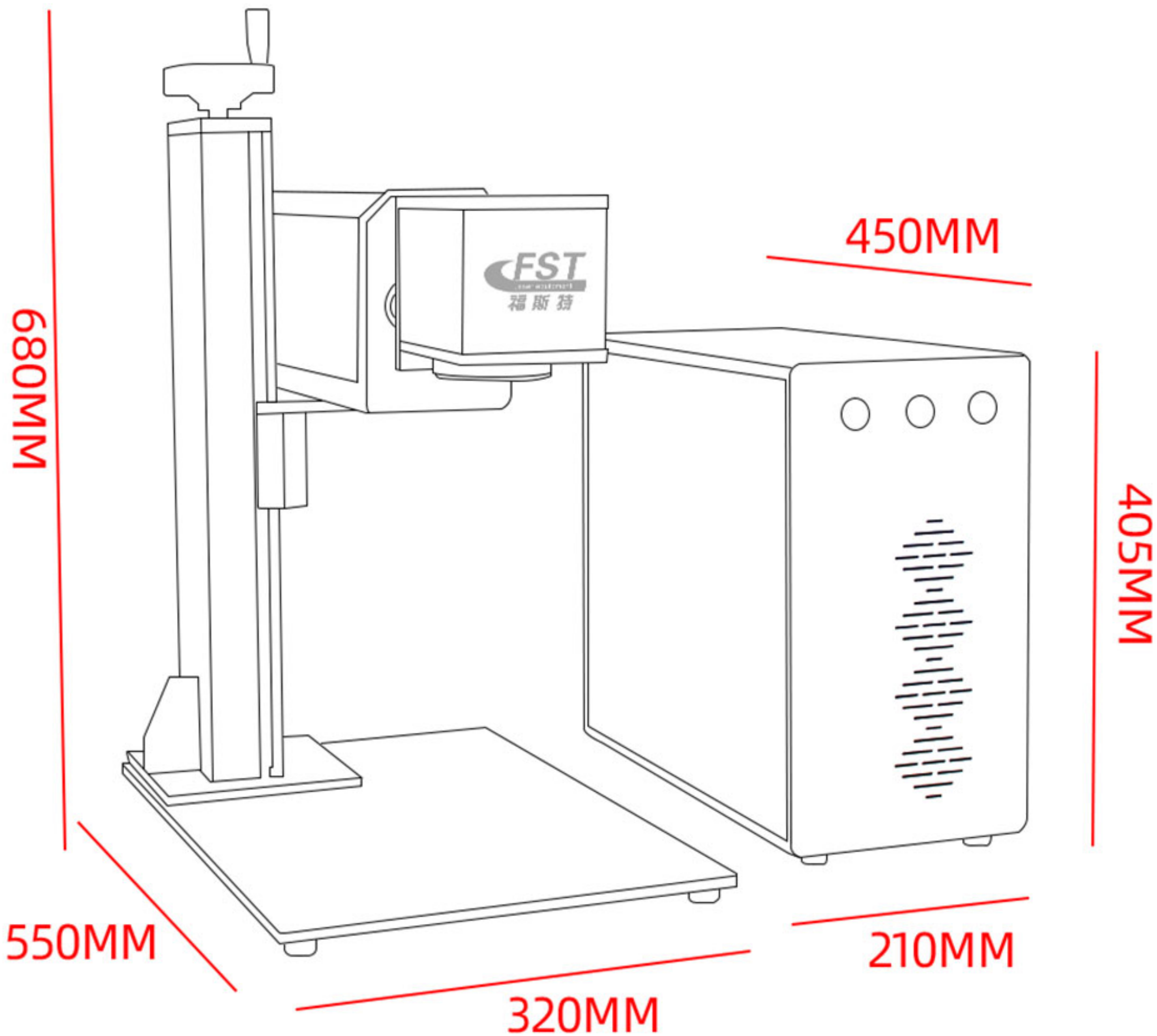
Main board switch

Vibrating mirror switch

Laser switch









Split laser marking machine



Cabinet laser marking machine



Closed laser marking machine



Handheld laser marking machine



Flying laser marking machine



Large-format (glass tube) laser marking machine





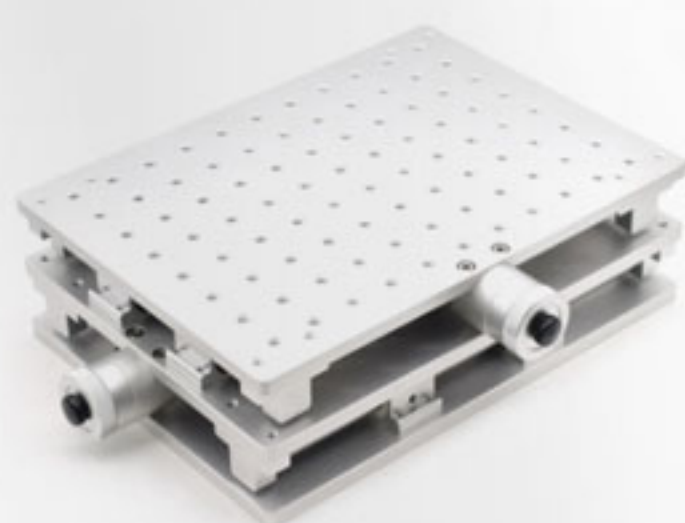
80MM ROTARY



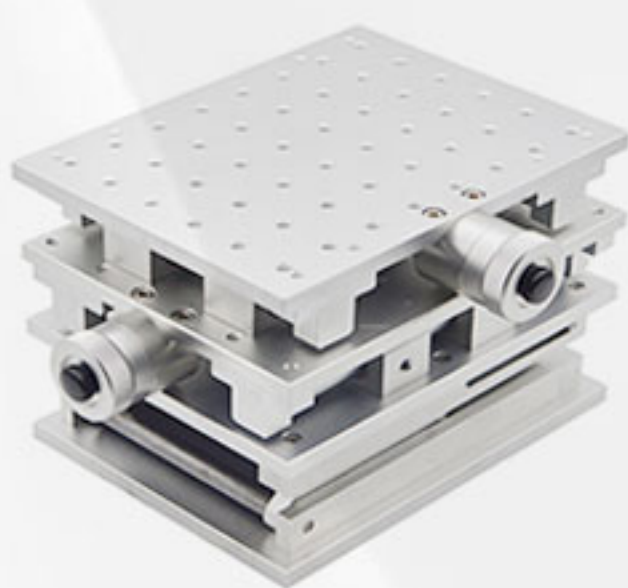
RING ROTARY



125MM ROTARY



2D WORKTABLE



3D WORKTABLE



PEN ROTARY

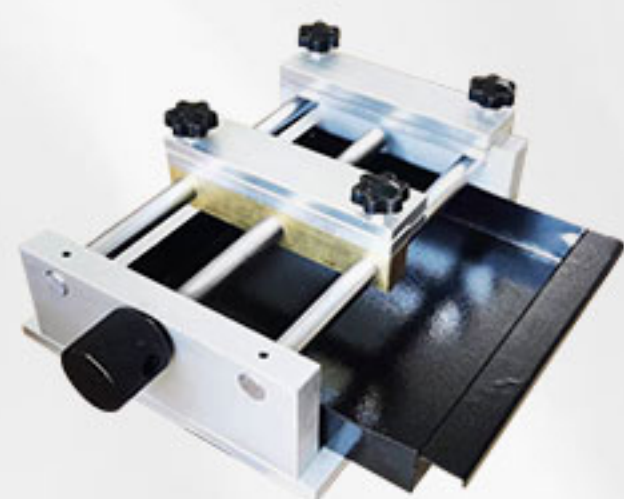


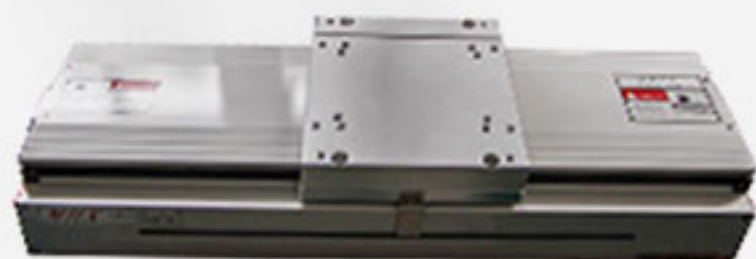
PLATE FIXTURE



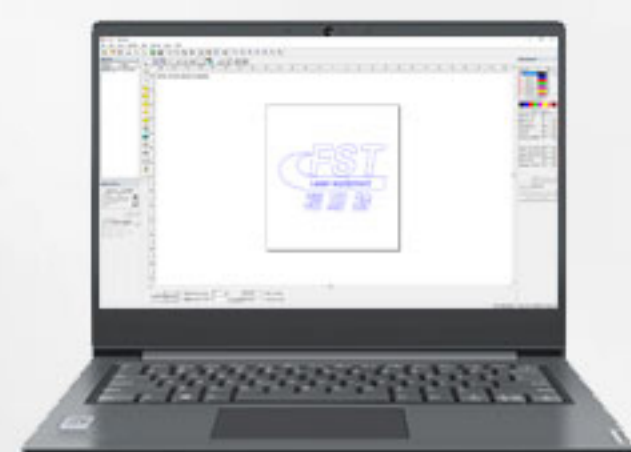
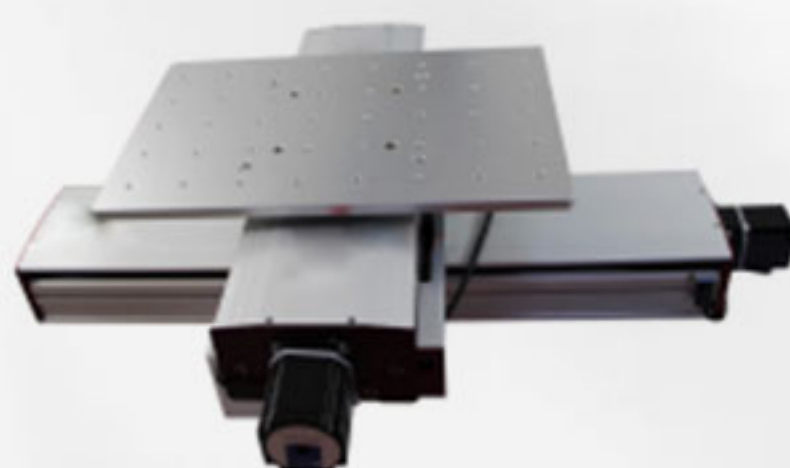
CUP ROTARY



SMOKE PURIFIER



SINGLE / DOUBLE AXIS EXTENDED PLATFORM

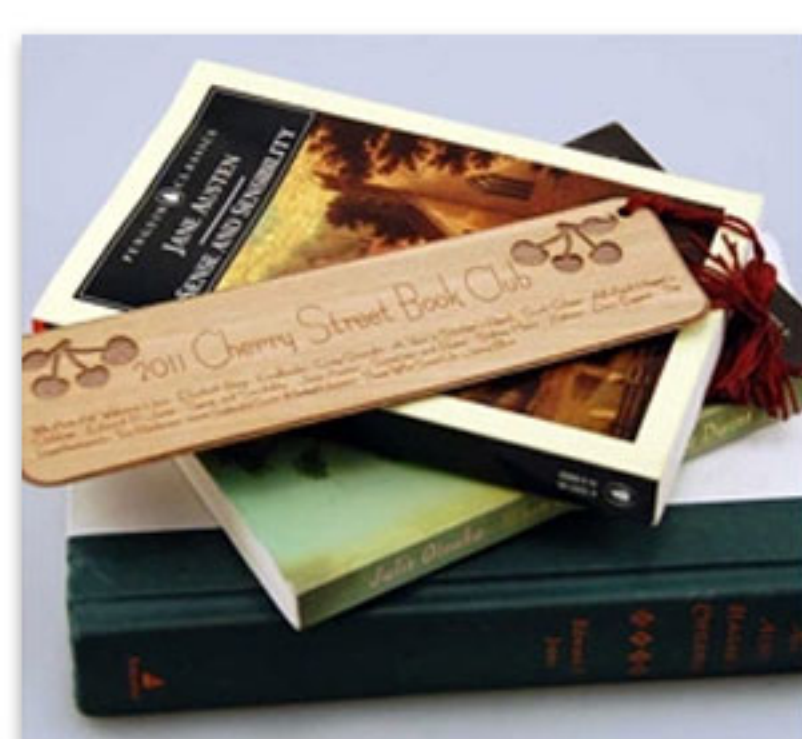


COMPUTER



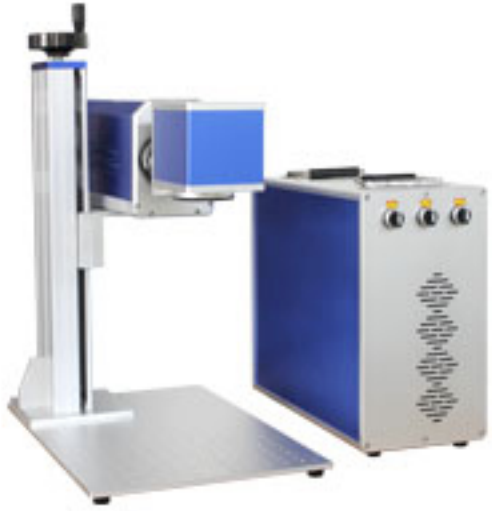
Co2 laser marking engraving machine can engrave serial number, picture, logo, random number, bar code, 2d barcode and various arbitrary patterns and text on flat plate and also cylinders.

The main processing object is non-metal, widely used in craft gifts, furniture, leather clothing, advertising signs, model making food packaging, electronic components, fixtures, glasses, buttons, label paper, ceramics, bamboo products, product identification, serial number, pharmaceutical packaging, printing plate making, shellna melate, etc.





# DELIVERY PROCESS



Machine cleaning and  
Protective oil processing



Wrapping with  
protective film



Wooden box sealing



Container Sealing  
and Transportation



container loading



Forklift moving goods







Tool protection



Focal length ruler



Data Line



Power Cord, Ground wire



U disk



Wrench



Foot Switch



USER MANUA